

BLUES

Sustainability
report
2021/2022

TUI BLUE

CONTENT

- TT Hotels info.....3
- Why Travelife?.....5
- Sustainability department of TT Hotels.....6
- Objective/Commitments.....7
- Passion for sustainability program.....9
- Sustainability policy.....10
- Sustainable management system.....11
- Sustainability.....12
- Hotel guest statistics.....13
- TUI BLUE Makarska.....14
- TUI BLUE Kalamota Island19
- TUI BLUE Adriatic Beach26
- Recognition programmes and staff activities 2018.....30
- Looking after employees and protecting human rights.....33
- Recycling improvements 2018.....38
- Donations 2018.....39
- TT Hotels Energy – monitoring performance41
- Structure/source of electrical energy used in SKIR (fossil VS renewable).....61
- Structure/source of electrical energy used in TBAB & TBM (fossil VS renewable).....62
- Targets.....63

TT Hotels Croatia company info

TT Hotels Croatia is a **hotel group and part of the largest travel company in the world - TUI Group**, which has in its portfolio over 1600 travel agencies and portals, five airlines with over 150 aircrafts and over 400 hotels.

TT Hotels Croatia (formerly Karisma Hotels Adriatic) was **founded in 2013 in Zagreb**. In its portfolio, it manages **top accommodation facilities in attractive locations on the Makarska Riviera and Dubrovnik's Elafites**. Hotels with a total capacity of 750 rooms, one camp and over 500 employees form the backbone of its successful business and a healthy foundation for further development.

By following global and local trends, we strive to improve our business every day, and the result of our work and confirmation of high quality are our results, expansion of the market, and partner network and constant growth. We are equally focused on providing the highest level of service to our guests as well as on providing top working conditions to our employees.

Motivated and satisfied employees, inspired and loyal guests and sustainable business are TT Hotels Croatia Group core values, and as such the main determinant of both day to day business operations and long-term strategy.

The Adriatic, separating Europe's largest mountain ranges and holding over 1,300 islands, is a true sensory explosion, and **TT Hotels** contemporary hotels are right in the center of it all, stretched along the **Makarska Riviera**, fairylike **Riviera of Dubrovnik of Croatia**. These extraordinary places offer superior holiday experiences for couples, catering to any romantic vision imaginable. **TUI BLUE Adriatic Beach, TUI BLUE Makarska and TUI BLUE Kalamota Island** offer adults a unique twist on holidays. Come and You will create unforgettable memories.

Makarska Riviera is full of secluded coves, hidden beaches, delicate flowers and endless fields of fresh organic yield. It is here you can walk alongside rugged rocks and relish the sun reflecting in the azure Adriatic or find sanctuary in the pine forest the second you need a bit of shade. The shores of Dalmatia are amongst Europe's most dramatic shorelines, boasting some of the highest mountain peaks on the Mediterranean, and it is these towering mountains that hide the impressive archaeological sites of Roman mysteries and preserved

towns that hold examples of Greek, Roman, Venetian, and Slavic architecture. The coast miraculously escaped the concrete era of new times and left the nature to take lead. Sun seekers and inquisitive minds alike will be in awe of **Dubrovnik**, the pearl of the Adriatic. This gem offers history and charming activities in abundance, and quaint towns and villages of the **Dubrovnik Riviera** pose similar aura of enigmatic medieval rampart that is easily upstaged by the tempting Adriatic, the hues of the sunset, the sheltered gardens, the underwater mysteries and the buoyant bays. The beaches in Croatia are a part of the maritime domain, thus even though our hotels are dedicated to adults, children are allowed on all the beaches in Croatia.

Karisma Adriatic is dedicated to the environment and maritime protection and thus selects destinations abundant in natural beauty and the large number of attractive destinations demand that public services take an integral approach to beach management.

Croatia will enchant you with crystal clear water, scenic coastline and joie de vivre!

SUSTAINABILITY.
WHY PROTECTING OUR NATURAL
RESOURCES IS MORE THAN JUST
GOOD TASTE.

Why Travelife?

Gold

Travelife 
Sustainability in tourism

Travelife for Hotels and Accommodations is a certification scheme that helps hotels and accommodations manage and monitor their social and environmental impacts and communicate their achievements to customers.

Once subscribed, properties receive a full, third party, environmental and social audit, and if they fulfil the requirements of the sustainability system criteria, they may achieve the Travelife Gold certification. This certification can then be highlighted in their brochures, on their websites or other guest communications, as well as displaying their Travelife certification plaque in a public area of their property.

Travelife at the same time assists in communication of achievements within particular resort and sphere to the customers in the aim of reaching a better tomorrow for the generations to come.

It is for the life for all of us.

Sustainability department of TT Hotels Croatia

The goal of a sustainability department is to make the company more sustainable - that is, to help the company ensure its long-term future by protecting communities, restoring and conserving ecosystems, and creating competitive profit.

Members of TTHC Sustainability Department are:

Ivan Maleš, General Manager, TUI BLUE Makarska

Robert Betić, General Manager, TUI BLUE Adriatic Beach Resort

Mirjana Sočan, Corporate Human Resources Manager

Suzana Bučević, Board Member

Pavo Herco, Corporate Chief Technical Officer

Izabela Haring, Corporate Quality Manager

Together with all HODs, sustainability team makes sure all there is a sustainability plan that sets satisfactory targets and standards that are being implemented in day-to-day operations.





Objectives & Commitments

- Our objective therefore is not an objective, or goal as such – rather a dedication to integrating sustainable practices into our daily operations among collaborators, guests, shareholders and suppliers.
- This in turn contributes to lowering the properties' environmental impact while continuing to offer the best quality of service and maintaining the worldwide recognition for creative approach to hospitality and product innovation with care.



Objectives & Commitments

It is exactly the nature and community that gave us the backdrop to do what we know best, provide a perfect holiday experience. It is the nature and the community that provided us with our base that we need to take care of and give back to.

We are committed to our environment with reduction of energy, waste, and water use, as well as increasing support to the people, community and local businesses. We are committed to our guests by providing them with a caring surroundings and a greener tomorrow.

PASSION FOR SUSTAINABILITY PROGRAM

TT Hotels actively promotes conscious tourism at all its destinations. To do so, TT Hotels has created an integral program called Passion for Sustainability, which is applied from the corporate offices and all the way down to each department at the group's hotels.

This program oversees that TT Hotel's operations are in line with Global Sustainable Tourism Criteria, local and national regulations and the certification agencies with whom it currently works.



SUSTAINABILITY POLICY

Environmental protection is a global problem and therefore requires global solutions. It is not possible to protect the environment in a way that impedes economic development but needs to focus on how to achieve sustainable development. Therefore, in order to support sustainable development, we strive to introduce socially responsible behavior towards both the community and the ecological balance, with the aim of providing quality to our guests.

The relationship between economic systems and those of an ecological character must be in balance. One of the significant contributions to sustainable development is the integration of the environmental management system in accordance with the requirements of ISO 14001 into the management system.

- Such a system first requires:
- conservation of natural resources
- introduction and application of new technologies
- abandoning activities that could jeopardize the implementation of sustainable development

Hotel environmental protection is only possible if all employees work together. We strive to promote environmental awareness among our employees through information and training.

Recycling is one part of the vision that seeks to create an opportunity for each employee, as well as the customer, to collect separately all types of useful waste at the point of origin. To this end, sorting waste such as cardboard, glass and degradable waste is being implemented as a sustainable system for separate collection of usable waste at our hotel. When ordering products, we also choose products in larger packages, thereby reducing the amount of waste that is produced during use. Among other things, it seeks to reduce the consumption of CO2 and resources such as electricity, water and heating with the ultimate goal of a more rational use of resources, where, ultimately, our priority is renewables over limited sources.

Also, the replacement of ordinary bulbs with LED bulbs is one of the things that we are introducing somewhat into the sustainable development system, precisely because of the longer life span and lower power consumption.

Investing in new technologies takes into account the quality and health of the product as well as the reduction of negative environmental impacts.

SUSTAINABLE MANAGEMENT SYSTEM

Since 2012, TT Hotels have developed a sustainable management system, which groups different aspects of different issues such as waste management, water, energy, flora, fauna, guest's information, etc.

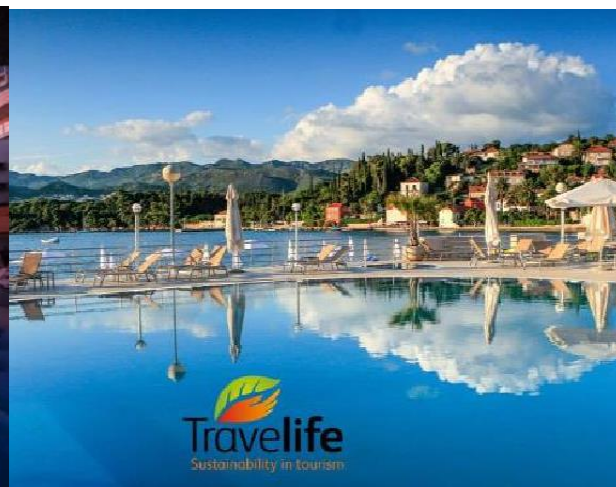
This system provides guidelines to implement measurements and actions that will be an integral part of the Passion for Sustainability Program, which will help achieve the goals of certifications. All TT Hotel's properties implement the different components of the Passion for Sustainability Program, by integrating a Green Team with the colleagues and with the guide of one member of the Corporate Sustainability Team.

The different components of the Passion for Sustainability Program focus on achieving the highest possible efficiency on hotel operations.



SUSTAINABILITY

- Energy conservation programs in all hotels.
- Protection and promotion of flora and fauna projects in Makarska and Dubrovnik.
- (Swallow Nest Project, Botanical Garden, Crickets, Angry Orange Promotion, etc.)
- Promotion of local business/entrepreneurs and farmers/local products.
- Earth Day Everyday Program in cooperation with local Fire Department and municipal office of Kolocep.
- Promotion and preservation of local cultural heritage through cooperation agreement with
- Diocese of Dubrovnik – The Parish of the Assumption.
- Kolocep local community interaction days
- Beach algae cleaning drive with local divers on Island of Kolocep
- Igrane – Makarska Water polo operational/financial support
- Recycling drives in Zagreb HQ Office
- Digital administration promotion and programs
- Participated in charity drives of supporting less fortunate



HOTEL GUESTS STATISTICS

| Sensimar Makarska | | |
|--|---------------|---------------|
| Budget: 85,13% Closing 2017: 84,74% | REAL 2018 | BUDGET 2018 |
| TUI Group | | |
| TUI Germany | 7968 | 7597 |
| TUI Nordic | 14234 | 14236 |
| TUI UK | 776 | 736 |
| TUI Belgium | 210 | 395 |
| TUI France | 216 | 310 |
| TUI Russia | 23 | 145 |
| Total - TUI Group | 23427 | 23419 |
| Total - non TUI | 1637 | 1573 |
| TOTAL | 25064 | 24992 |
| Occupancy | 85,38% | 85,13% |

| Sensimar Kalamota Island | | |
|---|---------------|---------------|
| Budget: 90,20% Closing 2017: % | REAL 2018 | BUDGET 2018 |
| TUI Group | | |
| TUI UK | 21542 | 22794 |
| JETAIR NL - TUI Belgium | 1311 | 0 |
| TOTAL TUI Group | 22853 | 22794 |
| Total - non TUI | 247 | 326 |
| TOTAL | 23100 | 23120 |
| Occupancy | 90,12% | 90,20% |

| Sensimar Adriatic Beach - 04/05-11/10 (summer season) | | |
|---|---------------|---------------|
| Budget: 92,35% Closing 2017: 92,62% | REAL 2018 | BUDGET 2018 |
| TUI Group | | |
| TUI UK | 27567 | 28051 |
| TUI Nordic | 7963 | 8440 |
| TUI Nederland | 487 | 535 |
| TUI Belgium | 450 | 442 |
| TUI France | 684 | 0 |
| TUI Russia | 26 | 0 |
| Total - TUI Group | 37177 | 37468 |
| non TUI | | |
| Total - non TUI | 2769 | 2080 |
| TOTAL | 39946 | 39548 |
| Occupancy | 93,28% | 92,35% |

| Sensimar Adriatic Beach - 04/05-15/12 | | |
|--|--------------|--------------|
| Budget: NA Closing 2017: 92,62% | REAL 2018 | BUDGET 2018 |
| TUI Group | | |
| TUI UK | 27567 | 28051 |
| TUI Nordic | 7963 | 8440 |
| TUI Nederland | 487 | 535 |
| TUI Belgium | 450 | 442 |
| TUI France | 684 | 0 |
| TUI Russia | 26 | 0 |
| Total - TUI Group | 37177 | 37468 |
| non TUI | | |
| Total - non TUI | 16013 | 2080 |

TUI BLUE Makarska

TUI BLUE Makarska is a gorgeous, intimate hotel catering to adults who wish to unwind in a dazzling, natural setting. The carefully remodeled hotel was specially designed in order to ensure a peaceful vibe. Enthusiastic and attentive staff, hushed colors, tasteful décor and fragrant pine forests will instantly help you find your happy place in Igrane. Our single aim is to make your vacation in TUI BLUE Makarska an exceptional experience. We guarantee you will feel right at home no matter if you choose a striking sea view room or a sensuous swim up suite. Take a dip to cool down in one of the outdoor pools just to warm up for the exquisite food served in our contemporary restaurants fit for connoisseurs. Also, there is a FKK beach located just 5 minutes walking distance from hotel.

Rekindle your romance with couples' activities such as hiking, scuba diving, share an ice-cream or just hold hands at our open-air cinema. Or simply stay in and search for stars while sipping on the best local wine. Visit pristine Croatia and let serenity become your second nature.



CUSTOMER RELATIONS

Relaying that we care might have been an issue, but each guest when approached properly will understand that protecting the nests in the long run is more important than leaving their towel to dry on the terrace. Also we gave them an option to enjoy the amazing sunset on our Bar and Restaurant terraces which they welcomed, encompassed with music and a perfect cocktail.

BIRDS OF FREEDOM

Dear Guests,

We invite you to join us in the enjoyment of the exciting flora and fauna of the amazing Makarska Riviera. You might notice that swallows particularly enjoy visiting your terraces and our resort paths and corners. As they hunt for insects and ease our days and lull us with their song and friendly nature, we would like to thank you in advance for respecting our untouched nature and for supporting us in the love and conservation of this threatened species in Croatia. Did you know that swallows are also referred to as Birds of Freedom? They are moreover particularly important to our sailors, as well as sailors worldwide - as being land based they are a sign of closeness to the shore, and thus home.

Thank you from the Management & the "Birds of Freedom"

Liebe Gäste,

wir laden Sie ein, die aufregende Flora und Fauna der unvorstellbaren Makarska Riviera mit uns zu genießen. Vielleicht werden Sie bemerken, dass Schwalben besonders gerne Ihre Terrassen, Pfade und Ecken unserer Erholungstätte besuchen. Während sie Insekten jagen, eine entspannte Atmosphäre schaffen und uns mit ihrem Gesang und ihrer freundlichen Natur in den Schlaf wiegen, möchten wir uns bei Ihnen im Voraus bedanken, dass Sie unsere unberührte Natur würdigen und dass Sie uns bei der Liebe zu Schwalben und bei der Erhaltung dieser gefährdeten Art in Kroatien unterstützen. Wussten Sie schon, dass Schwalben auch als Freiheitsvögel bekannt sind? Sie sind auch von besonderer Bedeutung für unsere Seeleute und auch für Seeleute weltweit, da sie als Landvögel als Zeichen der Küstennähe und dadurch auch der Heimatnähe gelten.

Wir bedanken uns im Namen der Leitung und der „Freiheitsvögel“!

Poštovani,

sa zadovoljstvom vas pozivamo da nam se pridružite u uživanju u uzbudljivoj flori i fauni čudesne Makarske rivijere. Mogli ste primijetiti kako lastavice posebno uživaju našim terasama, balkonima i u drugim kutcima u okruženju. One se hrane kukcima i tako nam pomažu u vrućim ljetnim danima, a možemo redovito uživati i u njihovom pjevu i ljupkosti, pa bismo vam unaprijed željeli zahvaliti što čuvate našu prekrasnu nedirnutu prirodu i pomažete nam u očuvanju ove nama jako drage i nažalost ugrožene vrste u Hrvatskoj. Jeste li znali da su lastavice poznate kao simbol mira i slobode? Posebno su značajne našim i svjetskim mornarima, jer one žive na kopnu i znak su blizine obale i doma.

Hvala vam. Vaša Uprava i vaše lastavice.



WORKING WITH AND SUPPORTING LOCAL COMMUNITY

Once upon a time there was a picturesque village of Igrane, right there where the rock kisses the sea and the wave cuddles with a shore, where the campanile bell announces a next dawn...

Igrane is a village in Croatia which has about 420 inhabitants where tourism and agriculture are the main sources of income for the inhabitants.

Let us take you for a walk through Igrane, where you have opportunity to get to know our lovely village and see it as our hotel guests see it.

Our dear representatives and entertainers organize a walking tour in which all parts of our community are included, our guests, our employees and last, but not least our locals.

Let's start with our first station...



WORKING WITH AND SUPPORTING LOCAL COMMUNITY

Let's start with our first station...



1. *Church of the Immaculate Conception, XVIII c.*

This little church was

built by family Ivanišević-Šimić by their palace and was discovered by bishop of Dubrovnik, on the feast of Our Lady of the Rosary, 4th of October 1998.



2. *Baroque palace of the Šimić-Ivanišević family, 1760*

Near the harbor, in 1760 the

Baroque summer residence Šimić-Ivanišević was built. The sarcophagi found in the cemetery testify to the existence of the settlement in Roman times, and the name Igrane was first mentioned in 1466.

3. *Oil society*

It operates since 1996, producing high quality olive oil, after which the region Dalmatia is famous. Igrane, which used to be traditional center of olive oil production, still hasn't left their olive trees untreated. Therefore, this facility has been refurbished with the joint power of inhabitants.



4., 5. „Zalinala kula“, 1668

This Tower is unique because a fortification object like this is not to be found in other places in the

whole area, and wide. The purpose of this monument was to defend Igrane from the Turkish attacks.



6. *Roman bridge of Igrane*

Roman bridges, built by ancient Romans, were the first large and lasting bridges built. Roman bridges were built with stone and had the arch as the basic structure.



7. *Chapel of the Holy Trinity, 1909*

While Jure was fishing for fish in New Orleans (USA), a huge orchid appeared. He vowed and promised to build a chapel. He did not return to his place of birth but his chapel testifies to his vow.

WORKING WITH AND SUPPORTING LOCAL COMMUNITY

As well as we introduce our guests with historical and cultural resources of our village of Igrane, we introduce them with locals and their everyday life. There is a newly renovated promenade passing in front of the hotel, as well as stairs renovated by the hotel that are used by local people in order to facilitate their way to the beach. In that promenade they have chance to see locals doing what they have been doing through history...producing olive oil and fishing, but also see the modern side of this historical village with restaurants that serve traditional Dalmatian specialties. Besides chatting with owners of bars and restaurants around the hotel, they have opportunity to taste some of the specialties.



Taking this walk with us, you had opportunity to get to know our story of Igrane, story in which culture, history and our community live and work happily together...



TUI BLUE Kalamota Island Resort

At TUI BLUE Kalamota Island Resort guests are courted with nature, assisted by surroundings that provide a full experience of a well-deserved holiday. The property and professional staff are intertwined to stimulate all senses, pastimes and leisure pursuits. The resort is located on a beach that extends to the little village and port, offering seclusion and ample space for the guests that wish to retain their peace. TUI BLUE Kalamota Island Resort is perfect for adults who choose to be pampered in nature. Active relaxation in intimate surroundings is what awaits the guests.

Only 30 minutes by boat from Dubrovnik, Kolocep Island is a top kayaking, snorkeling and diving spot due to its numerous caves and untouched water life, all within your grasp, cleverly secluded and preserved for centuries to the elation of our guests. Kolocep, or rather Kalamota Island is a small 1 square mile traffic-free island with only 160 friendly inhabitants. Surrounded by crystal clear waters and dense scenery of pines, groves with meandering paths together with the friendly fauna symphony concur the setting for its ancient Greek name kalos niktos – beautiful nights.







Summary

The location of the resort is on a traffic-free island of Kalamota, which although as a location without cars provided a perfect spot of our first resort – also came with the difficulty of arranging the waste removal and overall set-up of waste management standards and procedures.

Given that in Croatia all beach land is a zone that belongs to the state, we had to find a way to communicate with guests that children on the therefore public beach is something we have no control of.

Support of the local community was an absolute pleasure on Kolocep, as the authentic produce was something the management, our F&B sector and guests truly welcomed. It was also a pleasure to organize with the diving community the cleaning of the beach as the divers welcomed going into water to help us get rid of sea-weed and have an amazing access to the water for not only guests, but fishermen and local community as well.

Finally our botanical garden is a gem on it's own, standing on the land that carries the shadows of buildings centuries old – and protected by the state.

SUPPORTING THE LOCAL BUSINESS

One of our colleagues in the resort is a lady who makes the most amazing 'angry orange' jam. She has a special stall in the resort where she sells gifts made from locally grown products such as olive oil, lavender and olive soap, dry lavender and jams.

Other happy family members are crickets that live in the botanical garden amongst the array of flora we have kept intact – if you can find your way around the property which has trees that have not been touched for decades, even if they do decrease the number of sea-view rooms, it is our commitment to the nature that some things are just more important than the sea-view and a higher category for sale purposes.



BITTER ORANGE

Or as locals call it, "Angry" Orange

has always adorned the gardens of Dubrovnik as an almost essential detail against stone walls of our beautiful city and glories of its summer residences. Its juicy fruit and leaves have continued to play a major role in the gastronomy. Even today, people enjoy the bitter orange delicacies made according to traditional recipes.

Jam made of bitter orange combines tradition and the present time as an indigenous gastronomic consumption souvenir which contains the color, aroma and taste of the Dubrovnik region and Croatia as a Mediterranean country.



CRICKET

Cvrčak

lat. Lyristes plebejus

The rule of the standard cricket is to sing and not be seen. The males make a loud chirping sound by stridulation and have their stridulatory organ located on the tegmen. They are particularly vocal in the hot afternoon hours and their chirping represents a love call. Below 25°C they do not have enough energy for chirping. The Cricket has only three months to do three things: sing, love and die.

Pravilo običnog cvrčka je pjevati i ne biti viđen. Mužjaci na zatku imaju cvrčalo kojim ispuštaju prodorne zvukove, posebno za vrućih popodnevnih sati. Njihovo pjevanje predstavlja ljubavni zov. Na temperaturi ispod 25 stupnjeva nemaju dovoljno energije za cvrčanje. Cvrčak ima samo tri mjeseca da učini tri stvari: pjeva, voli i umre.

A constant reminder what is most important and should be cherished is engraved in our everyday life. This means that local firefighters are our family, as is the Parish with whom we have signed a contract for the promotion of the local heritage.

And this includes making sure that the little ones have a playground to play at, which was donated to the local community by the adults' resort. Every swing, energy saving switch, cricket and lavender bush is important, and Travelife certification process and standard reminds us and promotes that.

KALAMOTA EXPERIENCE

Let every day be Earth Day!

- If possible, use rechargeable batteries
- Turn off the TV if you are not using it
- Opt to have your towels laundered less frequently
- Do not feed native fauna
- Turn off the tap while you brush your teeth or shave
- Respect local flora
- Turn off the lights if you leave the room
- Visit the nearby archeological sites

Respect local flora and fauna and learn about Kalamota and our heritage.

Open air fire and flame is forbidden.

SENSIMAR



Celebrating cultural and culinary heritage & involving guests



The islands of the Dubrovnik archipelago have been known since ancient times as the Elafite Islands. This name was written down for the first time in the work *Naturalis historiae* of Pliny the Elder in the 1st century AD (from the Greek *elaphos* deer, hence *elaphinos* land full of deer, actually coming from Greek mythology, in which the deer symbolises the groves and woods under the special patronage of Artemis). This is an island group of 13 islands, islets and rocks, more usually thought to consist of the three inhabited islands Kolčep, Lopud and Sipan. Kolčep is the most southerly island in Croatia and the one closest to Dubrovnik; it has an area of 2.63 square kilometres and a population of 148. All the local people call it Kalamota, which might, from the Latin *calamentum*, mean "land covered with rushes"; alternatively, the name might be linked to the local expression *kalamuča* or a fisherman's pole. The coast of the island, which is mostly indented, has a total length of 11.2 km. It stretches from the southern side from Cape (or Point) Beždan to Cape Čavalić, where the land falls steeply down in cliffs, with small caves, recessed into the coastline, here the sinoco can gust wildly and the coast is almost inaccessible from the land, and in the part around Cape Kamenica the cliff plunges deeply into the depths of the sea, somewhat a little more to the west arching over a "blue grotto" the fabulous blue of which derives from the gravel deposits on the bed here according to the telling of the old fishermen the *Mediterranean monk seal* has been seen. Along the top of the cliffs is an extended crest of luxuriant pinewoods, partly protected as *Žužej Forest Park* and then, around Cape Beždan to the east as "Borje Forest Park". On the western side of the island around Cape Čavalić to Cape Ratac the coast is softer and gentler, it is stony, but exposed to the north-westerly, the *maestral*. Donje Čelo Bay pulls back here deeper into the land, with a pebbly beach at the head. The vegetation goes right down to sea level, which suggests how well the place is protected from winds and waves. At the head of the bay is the one ancient site excavated to date. Igalo; this is a rectangular building, 60 x 10 m floor plan, walls 60 cm thick, up to 1 to 2 m in height in some places, in which quite a large quantity of *amphorae* and *pithei* have been found, suggesting it was a warehouse for oil and wine; alongside them bronze hooks were found, needles for making nets, and weights for the nets, while the remains of the ancient inhabitants of the island at the time of Roman rule were engaged in farming and in fishing. Cape Ratac is a protected forest park. The northern side of the island is a solidly stony coast, exposed to the northerlies, with several bays. In the biggest inlet is the settlement of Gornje Čelo. Along the centre of the field is a fertile plain surrounded by limestone ridges (Kameno brdo, Spasovo brdo, Brdo, the highest elevation being the 125 m a.s.l. Križ). Since time out of mind the terraced hillsides have been planted with olives and vines, locusts, almonds, whitty pears (fruit of the service tree) and figs. From the flat centre of the island, on both sides of the ancient way between Gornje and Donje Čelo there were olive groves, in the crowns of which climbed vines with big bunches of purple grapes, a wonderful sight worthy of the verses of Homer. This marvellous coexistence has in recent times been wiped out by the spread of the Aleppo and maritime pines which squeeze out the other plant species. Apart from indigenous plant species, there are various subtropical and tropical plants brought in by seafarers (palm, acacia, eucalyptus, agave, aloe and others), and the whole island abounds in indigenous medicinal herbs. People discovered Kolčep long in the past. Traces of human settlements are numerous in various places along the island, taking us back into the distant past. Literally everything in the island was created by the farmer's mattock, the oar and the sail. The oldest remains found derive from the Roman period (no remains of building from the Greek period have been found, yet it is likely that Kalamota was ruled by the Greeks before the Romans, and the name *Kalamota* could also be related to the Greek *Calafota* or *Calaphodium*). Thus in the Donje Čelo area, a coin from the Hellenistic period was recently found (the turn of the 3rd and 2nd centuries BC), which says that these regions were involved in trading in the Mediterranean area.

From the period of Roman rule, the remains of three marble sarcophaguses have been found,

two of which are particularly important and from the great value of the Roman carving work scattered in various places, and of the island. The first is Attic, is made from Pentelic marble, and consists of 2 figures, which fit together. The extant part clearly shows that this is part of the front of a sarcophagus and that the relief showed the hunt of the Centaurs for a lion and lioness, and according to Professor Čambel the most probable date to be ascribed to it is the period of 170 to 160 BC. The remnant of the second sarcophagus is additionally valuable and interesting because it was used as material for an early Romanesque tegurium with inscription. This is a fragment of the casket of the sarcophagus, with pillars and arcades, below which a "genius" motif is presented. It is made of Carrara marble, suggesting that it was made in Rome, and can be dated to about 270 AD.



When the Roman Empire fell, the strongly organised government that had provided peace and order at sea vanished. With the Milan Edict of 313, Christianity became an acknowledged faith, and spread increasingly in the area today occupied by Croatia. At the end of the seventh century, when Epidaurus fell, the diocese moved to Dubrovnik and coexistence was established between the incoming Croats and the indigenous Romanised people; when they were converted, pre-Romanesque became an important factor in religious architecture with the construction of architecturally very individual religious buildings featuring stone furnishings and murals. A large number of pre-Romanesque churches (seven have been precisely located to date) are scattered over the Donje Čelo area, a coin from the Hellenistic period was recently found (the turn of the 3rd and 2nd centuries BC), which says that these regions were involved in trading in the Mediterranean area.

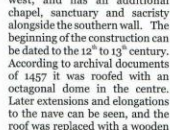
In the Parish Collection a reconstructed roodscreen of the 11th century has been set up; this was once part of the Church of St Michael. Here the memory of an unknown Croatian queen probably Jelena or Helena, wife of Đimitar Zvonimir and sister of the King of Hungary, Ladislav, from the Arpad dynasty is



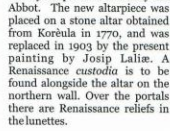
fittingly cherished. The inscription on the tegurium could be translated as: Please all you who look here say your sincere prayers for the sister and queen who built this church in honour of St Michael the Archangel. Fragments of this roodscreen have been found scattered in various places, and after the archaeological investigation in 1997-1998 a reconstruction was carried out.

THE HODOGRAM AROUND THE SITES Will take you from the landing at Donje Čelo first of all to the main church and the Parish, in which the Kolčep Parish Collection is located.

1. The Parish Church on Kolčep is dedicated to the Virgin of the Assumption and was once called the Parish Church of St Mary, while the old pictures show that it was actually consecrated to the Virgin of the Assumption or in the vernacular phrase Great St Mary. Today Assumption Day is celebrated as the feast of the patroness of the whole island. The church has a nave and no aisles, it is oriented lengthwise east to west, and has an additional chapel, sanctuary and sacristy along the southern wall. The beginning of the construction can be dated to the 12th to 13th century. According to archival documents of 1457 it was roofed with an octagonal dome in the centre. Later extensions and elongations to the nave can be seen, and the roof was replaced with a wooden one, probably after the dome had collapsed. The polypych of Ivan Ugrinović *Madama with Saints* was commissioned in 1424 by the parish church for the main altar, and in 1775 it was replaced by a picture of the Assumption by Andrea Pogliese and moved to the nearby chapel of St Anthony the Abbot. The new altarpiece was placed on a stone altar obtained from Korčula in 1770, and was replaced in 1903 by the present painting by Josip Lalić. A Renaissance *custodia* is to be found alongside the altar on the northern wall. Over the portals there are Renaissance reliefs in the lunettes.



5. North of the road to Gornje Čelo, still in the Donje Čelo settlements, lies what is called *Toretta* or *Turret* or *Tower* - a defensive power of square ground plan with three stories and a roof with four slopes. Below the roof is the parapet that protects the openings of the attic, and in the walls below there is a string of loopholes.



3. By walking along the flat part of Donje Čelo Bay to the west you will arrive at the little Church of Holy Trinity; this is mentioned in old documents in 1665, and over the door there is an inscription saying that it was "re-consecrated in 1799". In the northern wall of the facade, a part of a pre-Romanesque *platéum* is incorporated, as spolia from some older site. The church is still used for its original function.



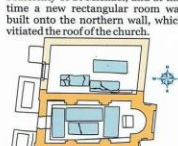
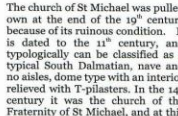
4. Along the same way back again we can turn into a steep winding path to the village called Kaštio where the little Chapel of St Anthony the Abbot is located, a little church with a nave and no aisles and a semicircular apse; the date 1371 is mentioned in the archival accounts. On the western side there is a dovecot belfry with a very old bell, dating to 1412. Here the polypych of Master Ugrinović of 1434 was once kept, although it was as broad as the whole of the apse, which indicates that it was certainly brought here later, and not made for the church. The polypych is now exhibited in the Parish Collection because of the better microclimatic conditions.



7. St Nicholas, Church in the Cemetery The construction is dated to the beginning of the 11th century, and can perhaps even be dated to the 10th. When St Michael's was torn down at the end of the 19th century some of the building material was used to put up the ugly porch of the church, which was removed during the protective works in 2000. Research uncovered fresco painting done in the second phase of the construction works, dated to the second half of the 11th century, as well as traces of a dome and original entry door, which via reconstruction was restored to its original condition. In the dovecot belfry on the facade is a bell that was founded by the famed bell founder John of Rab in 1536.



6. Archaeological Site, St Michael's The church of St Michael was pulled down at the end of the 19th century because of its ruinous condition. It is dated to the 11th century, and typologically can be classified as a typical South Dalmatian, nave and no aisles, dome type with an interior relieved with T-pilasters. In the 14th century it was the church of the Fraternity of St Michael, and at this time a new rectangular room was built onto the northern wall, which visited the roof of the church.



A site presented after protective works in 2000.

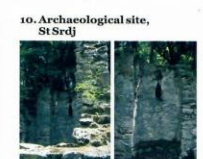
11. Archaeological site of St Saviour This is located at the top of Spasovo Hill, and has not been investigated.

12. Archaeological Site, St Peter's The remains of the wall of the church are built into the boundary wall of a long valley south of the road to Gornje Čelo below Brdo. In the archival records it is mentioned in 1283. The site has not been explored. Along the road to Gornje Čelo, is a standing slab with a crucifix, and this probably comes from the church. This slab is associated with a legend about an evil headman whom the people thrashed with clubs.



5. Archaeological Site, St Blaise's (not investigated) This is to be found in Lampričevo, south of the road to Gornje Čelo, comprising ruins with a well preserved 15th century apse.

9. Archaeological site, St John's (not investigated) In Lampričevo, south of St Blaise, are the remains of a little church with a nave and no aisle with a semicircular apse, mentioned in the archival documents as early as 1326.



10. Archaeological site, St Srdj South of St Nicholas's in the Cemetery goes a winding track to Bige Bay, which leads to the ruins of St Srdj, located in dense maquis. The sources mention it as early as 1283. Typologically, it is a pre-Romanesque South Dalmatian dome-type religious building with considerable Gothic features in the interior and exterior, dating from the 14th century, a surviving pre-Romanesque model in the Gothic. It is still being used for its original function.

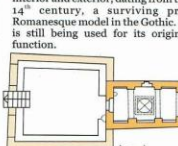
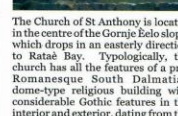
14. Archaeological Site, St Barbara in Borje Pre-Romanesque nucleus with additions

15. Archaeological site, St Francis in Jekavec A nave with no aisles, dome type building with T-pilasters, pre-Romanesque.

11. Archaeological site of St Saviour This is located at the top of Spasovo Hill, and has not been investigated.

12. Archaeological Site, St Peter's The remains of the wall of the church are built into the boundary wall of a long valley south of the road to Gornje Čelo below Brdo. In the archival records it is mentioned in 1283. The site has not been explored. Along the road to Gornje Čelo, is a standing slab with a crucifix, and this probably comes from the church. This slab is associated with a legend about an evil headman whom the people thrashed with clubs.

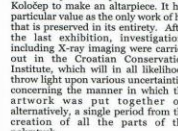
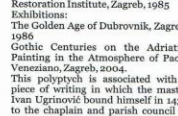
13. St Anthony of Padua The Church of St Anthony is located in the centre of the Gornje Čelo slope, which drops in an easterly direction to Ratac Bay. Typologically, the church has all the features of a pre-Romanesque South Dalmatian dome-type religious building with considerable Gothic features in the interior and exterior, dating from the 14th century, a surviving pre-Romanesque model in the Gothic. It is still being used for its original function.



14. Archaeological Site, St Barbara in Borje Pre-Romanesque nucleus with additions

15. Archaeological site, St Francis in Jekavec A nave with no aisles, dome type building with T-pilasters, pre-Romanesque.

Ivan Ugrinović MADONNA WITH SAINTS polypych, 1434, tempera on wood and gilding; 165 x 179 cm; Kolčep, from the Church of St Anthony the Abbot. Restoration: Workshop of the Regional Institute for the Protection of Monuments, Split, 1967; Croatian Restoration Institute, Zagreb, 1986 Exhibitions: The Golden Age of Dubrovnik, Zagreb, 1996 Gothic Centuries on the Adriatic: Painting in the Atmosphere of Paolo Veneziano, Zagreb, 2004. This polypych is associated with a piece of writing in which the master Ivan Ugrinović bound himself in 1434 to the chaplain and parish council of Kolčep to make an altarpiece. It has particular value as the only work of his that is preserved in its entirety. After the last exhibition, investigations including X-ray imaging were carried out in the Croatian Conservation Institute, which will in all likelihood throw light upon various uncertainties concerning the manner in which the altarpiece was put together or, alternatively, a single period from the creation of all the parts of the polypych.



Travelife
Sustainability in tourism

CELEBRATING CULTURAL AND CULINARY HERITAGE

The Parish Collection hotel supports and takes care of has organised tours for guests to visit an experience history of local community.

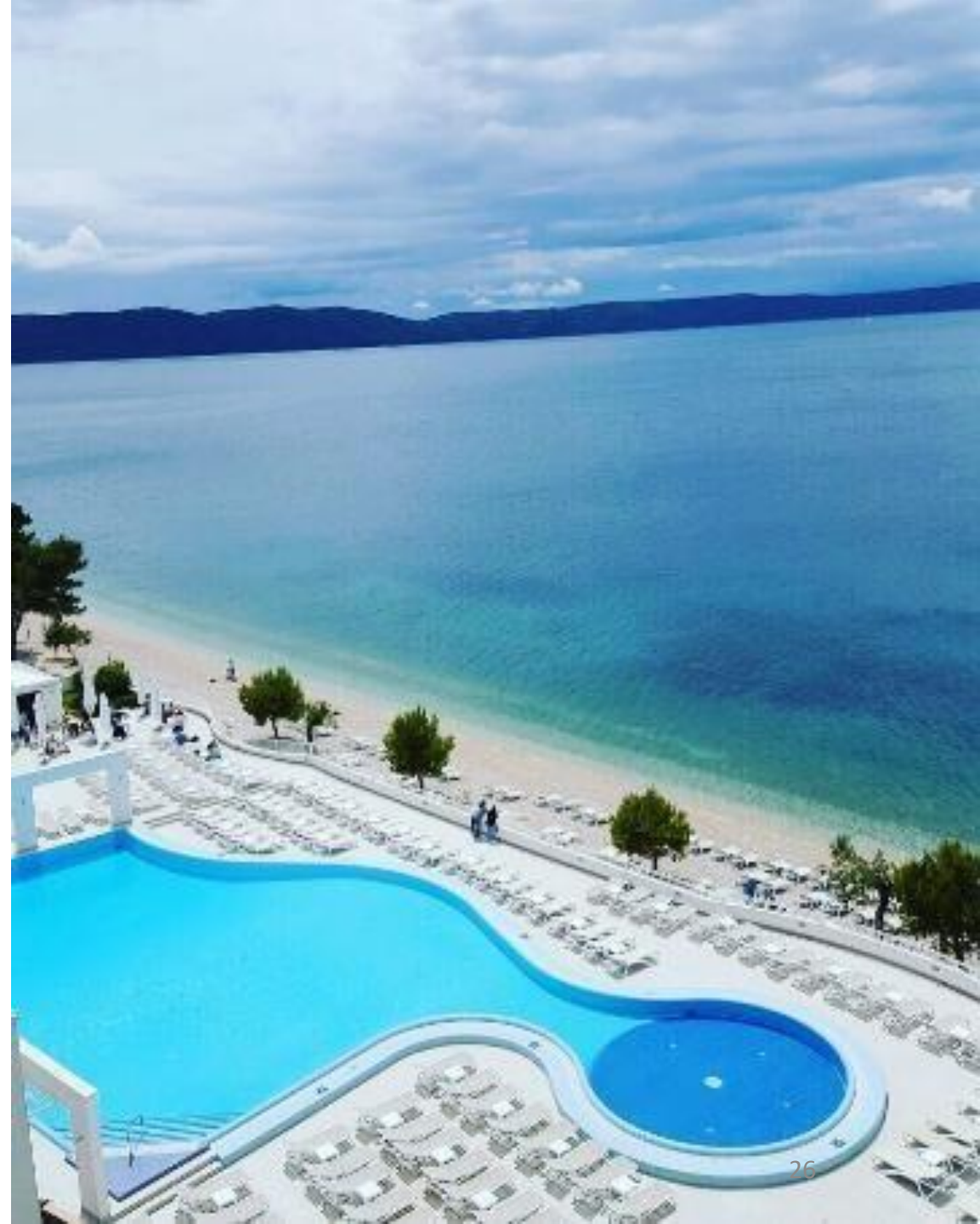


TUI BLUE Adriatic Beach

TUI BLUE Adriatic Beach is a place where understated elegance combines with luxurious amenities and services. Newly remodeled contemporary rooms offer stunning sea views of the crystal clear Adriatic.

Our restaurants, bars and café corners are envisioned to cater to your every taste, and offer variety during your stay with us. Lulled by the pine scents and sea breeze your culinary experience is further enriched by the calming surroundings that hide excitement when you least expect it. For the adventurers and history aficionados, there are daily excursions that will bring you back to Roman times, and beyond, whilst our La Vita Spa and Gym will cater to all your relaxing desires.

Lavish yet warmly residential, The TUI BLUE Adriatic Beach is quite simply one of the finest ways to experience the remarkable region of Makarska. Come and you fall in love again.






Travelife
Sustainability in tourism



TUI BLUE

TUI BLUE

Adriatic Beach



Travelife
Sustainability in tourism

Gold

Travelife
Sustainability in tourism

Summary

Given Croatia is in the EU and certain standards already exist, there were no major issues with implementation of standards other than communication with the local authorities and administration, as well as translation of all documentation.

The implementation helped in ways that certain standards had to be relayed to all involved in an innovative way, and therefore minimize customer service issues.

RECOGNITION PROGRAMMES AND STAFF ACTIVITIES 2021 - 2022

Employees not only want good pay and benefits; they also want to be treated fairly, to make a substantial contribution to the organization through their work, and to be valued and appreciated for their efforts. To show appreciation, many employers implement ongoing recognition programs designed to thank employees for a variety of achievements.



TBKI Team on DuMotion race 5k



Employee of the month
TBAB

- Employee of the month: FOH and BOH
- Best seasonal employee
- Staff receptions
- Staff parties
- Sports games
- Excursions
- Team building events

RECOGNITION PROGRAMMES AND STAFF ACTIVITIES



Staff Party SABR



Best colleague award



Karaoke Night

RECOGNITION PROGRAMMES AND STAFF ACTIVITIES



Employee of the month TBKI

Staff Party TBKI



Movie Night TBKI

Team Building and Team photo day



Looking after employees and protecting human rights

In TT Hotels, respect for human rights is as important as the prohibition of forced labor, discrimination, physical punishment, coercion and corruption. TT Hotels explicitly encourages employee education. Salaries, overtime and social benefits are in compliance with minimum legal or collective standards to ensure that the basic needs and personal income of employees are met. We ensure occupational health and safety within national legal frameworks and support the continued improvement of working conditions. As a company, we support the protection of biodiversity and the creation of a sustainable, viable future. It is binding on us to act in accordance with these guidelines. In addition, we can offer a collective agreement that actually integrates working conditions and the protection of human rights.



Looking after employees and protecting human rights

STAFF CANTEEN

- Restaurant improvement
 - ✓ Inside area decoration (pictures, wooden info panel, etc)
 - ✓ Visible and relevant information of good eating habits in the restaurant
- Menu improvement
 - Training:
- Revision of standards and procedures



TUI BLUE Kalamota Island Resort



TUI BLUE Makarska



TUI BLUE Adriatic Beach Resort



TT Hotels are united with its' local community trying to support improvement of any aspect of its life by promoting and purchasing domestic products, hiring employees, donating to non-profitable organizations and events.

Major contribution comes from city tax from each guest-night in our hotels making all of these improvements possible.

DONATIONS TO LOCAL COMMUNITY

| | Donated to | 2018 | 2017 |
|----|---|---------------------|---------------------|
| 1. | Water-polo club "Žale" Igrane | 15,000.00 kn | 15,000.00 kn |
| 2. | Touristic & craftsmen school | 6,000.00 kn | 6,000.00 kn |
| 3. | Union of workers in tourism | 5,000.00 kn | 5,000.00 kn |
| 4. | Local community Živogošće - organization of "Fishermen evening" | 11,629.17 kn | 5,464.81 kn |
| 5. | Local community Igrane - organization of "Fishermen evening" | 7,112.24 kn | 4,464.65 kn |
| 6. | Primary school Podgora | 5,100.00 kn | |
| | TOTAL | 49,841.41 kn | 35,929.46 kn |
| | DONATIONS 2018 vs 2017 | + 39% | |

PURCHASES FROM LOCAL SUPPLIERS

| Supplier | Goods | Trade 2017. SABR | Trade 2018. SABR | Trade 2017. SEM | Trade 2018. SEM |
|-----------------------------------|--|------------------------|------------------------|------------------------|------------------------|
| Filip d.o.o. | Fruits & vegetables local 'Neretva' Valley | 726,000.00 kn | 964,834.00 kn | 540,000.00 kn | 527,000.00 kn |
| Apfel d.o.o. | Goods for tourism | 397,000.00 kn | 370,000.00 kn | 211,000.00 kn | 138,000.00 kn |
| Babić pekara d.o.o. | Bakery products | 173,000.00 kn | 180,000.00 kn | 173,000.00 kn | 184,000.00 kn |
| Dukat d.d. | Milk & milky products | 245,000.00 kn | 275,000.00 kn | 165,800.00 kn | 121,000.00 kn |
| Ledo d.d. | Frozen fruits & vegetables | 479,000.00 kn | 587,000.00 kn | 344,000.00 kn | 335,000.00 kn |
| Pivac d.o.o. | Local meat | 105,000.00 kn | 65,786.00 kn | 59,000.00 kn | 38,000.00 kn |
| Podravka d.d. | Meat & meat products | 91,000.00 kn | 75,900.00 kn | 47,000.00 kn | 30,000.00 kn |
| Pik Vrbovec d.d. | Meat & meat products | 769,000.00 kn | 934,500.00 kn | 418,000.00 kn | 430,000.00 kn |
| Perutnina Ptuj | Poultry & poultry products | 15,000.00 kn | 23,300.00 kn | 12,000.00 kn | 16,000.00 kn |
| Ekos pekarnica d.o.o. | Bakery products | 184,000.00 kn | 120,910.00 kn | 88,384.00 kn | 60,000.00 kn |
| Škokić d.o.o. | Local meat | 147,000.00 kn | 72,000.00 kn | 93,000.00 kn | 425,000.00 kn |
| Poljoprivredno poduzeće Orahovica | Cro wines | 0.00 kn | 18,000.00 kn | 0.00 kn | 8,000.00 kn |
| Žuvela | Cro fish & shells | 327,000.00 kn | 180,000.00 kn | 206,000.00 kn | 84,000.00 kn |
| TOTAL | | 3,658,000.00 kn | 3,867,230.00 kn | 2,357,184.00 kn | 2,396,000.00 kn |
| 2018 vs 2017 (%) | | | 5.72% | | 1.65% |

TOTAL WASTE QUANTITIES PER PROPERTY

SENSIMAR ADRIATIC BEACH RESORT

| VRSTA OTPADA i KLJUČNI BROJ | 2016 | 2017 | 2017-16 | 2018 | 2018-17 |
|---|---------|---------|---------|-----------|---------|
| Mješani komunalni otpad | 926,850 | 860,250 | -66,600 | 1,034,827 | 174,577 |
| Muljevi iz sep. jama 200304 | 123,500 | 134,000 | 10,500 | 186,000 | 52,000 |
| Mješavine masti i ulja iz mastolova 190809 | 32,800 | 29,050 | -3,750 | 20,000 | -9,050 |
| Otpadna jestiva ulja 200125 | 855 | 1,420 | 565 | 1,600 | 180 |
| Otpadno drvo 20 01 38 | 1,480 | 0 | -1,480 | 160 | 160 |
| Metali 200140 | 1,040 | 0 | -1,040 | 320 | 320 |
| Metalna ambalaža 150104 | 97 | 0 | -97 | 220 | 220 |
| Drvena ambalaža 150103 | 1,320 | 0 | -1,320 | | 0 |
| Plastična ambalaža 150102 | 580 | 0 | -580 | 140 | 140 |
| Papirna i kartonska ambalaža 150101 | 2,540 | 0 | -2,540 | 2,810 | 2,810 |
| Otpadno staklo 170202 | 350 | 0 | -350 | | 0 |
| Staklena ambalaža 150107 | | | | 1,720 | 1,720 |
| Otpadna keramika 170103 | 900 | 0 | -900 | | 0 |
| Otpadni karton 200101 | 0 | 0 | 0 | | 0 |
| Otpadna plastika 170203 20 01 39 | 0 | 0 | 0 | 280 | 280 |
| Otpadni inox 170407 | 0 | 0 | 0 | | 0 |
| Alkalne baterije 160604 | 0 | 25 | 25 | | -25 |
| Otpadni tiskarski tineri 080317* | 0 | 20 | 20 | 40 | 20 |
| Informatička i Tk oprema 200135* | 0 | 150 | 150 | 110 | -40 |
| Elektr. i elektr. Oprema 20136 | 0 | 137 | 137 | 80 | -57 |
| Željezo i čelik 170405 | 0 | 0 | 0 | | 0 |
| Biorazgradivi otpad iz kuhinja i kantina 20 01 08 | 0 | 10,039 | 10,039 | 18,591 | 8,552 |
| Glomazni otpad 20 03 07 | 0 | 0 | 0 | 240 | 240 |

* opasni otpad

SENSIMAR MAKARSKA

| VRSTA OTPADA i KLJUČNI BROJ | 2016 | 2017 | 2017 -16 | 2018 | 2018-17 |
|---|---------|---------|----------|--------|---------|
| Mješani komunalni otpad | 598,290 | 536,130 | -62160 | 510010 | |
| Mješavine masti i ulja iz mastolova 190809 | 11,300 | 8,500 | -2800 | 5000 | -3500 |
| Otpadna jestiva ulja 200125 | 215 | 50 | -165 | 220 | 170 |
| Otpadno drvo 170201 20 01 38 | 880 | 0 | -880 | 1380 | 1380 |
| Metali 200140 | 630 | 0 | -630 | 1800 | 1800 |
| Metalna ambalaža 150104 | 72 | 0 | -72 | 120 | 120 |
| Drvena ambalaža 150103 | 680 | 0 | -680 | 0 | 0 |
| Plastična ambalaža 150102 | 425 | 0 | -425 | 80 | 80 |
| Papirna i kartonska ambalaža 150101 | 1,720 | 0 | -1720 | 1850 | 1850 |
| Otpadno staklo 170202 | 180 | 0 | -180 | 0 | 0 |
| Staklena ambalaža 15 01 07 | N/A | N/A | N/A | 850 | 850 |
| Otpadna keramika 170103 | 530 | 0 | -530 | 0 | 0 |
| Otpadni karton 200101 | 0 | 0 | 0 | 0 | 0 |
| Otpadna plastika 170203 20 01 39 | 0 | 0 | 0 | 820 | 820 |
| Otpadni inox 170407 | 0 | 0 | 0 | 0 | 0 |
| Alkalne baterije 160604 | 0 | 15 | 15 | 0 | -15 |
| Otpadni tiskarski tineri 080317* | 0 | 15 | 15 | 0 | -15 |
| Informatička i Tk oprema 200135* | 0 | 100 | 100 | 0 | -100 |
| Elektr. i elektr. Oprema 20136 | 0 | 78 | 78 | 120 | 42 |
| Željezo i čelik 170405 | 0 | 0 | 0 | 0 | 0 |
| Biorazgradivi otpad iz kuhinja i kantina 20 01 08 | N/A | 8,025 | N/A | 243 | 243 |
| Glomazni otpad 20 03 07 | | | | 1680 | 1680 |

SENSIMAR KALAMOTA ISLAND RESORT

| VRSTA OTPADA i KLJUČNI BROJ | 2016 | 2017 | 2017-16 | 2018 | 2018-17 |
|---|---------|---------|---------|---------|----------|
| Mješani komunalni otpad | 511,980 | 646,140 | 134160 | 507,060 | -139,080 |
| Muljevi iz sep. Jama 200304 | 0 | 0 | 0 | | 0 |
| Mješavine masti i ulja iz mastolova 190809 | 4,200 | 4,100 | -100 | 345 | -3,755 |
| Otpadna jestiva ulja 200125 | 1,250 | 1,400 | 150 | 190 | -1,210 |
| Otpadno drvo 170201 | 0 | 0 | 0 | 200 | 200 |
| Metali 200140 | 0 | 0 | 0 | 0 | 0 |
| Metalna ambalaža 150104 | 0 | 0 | 0 | 0 | 0 |
| Drvena ambalaža 150103 | 0 | 0 | 0 | 0 | 0 |
| Plastična ambalaža 150102 (litara) | 0 | 0 | 0 | 29,384 | 29,384 |
| Papirna i kartonska ambalaža 150101 | 850 | 1,200 | 350 | 6,000 | 4,800 |
| Otpadno staklo 170202 | 220 | 200 | -20 | 1,180 | 980 |
| Otpadna keramika 170103 | 800 | 750 | -50 | 1,220 | 470 |
| Otpadni karton 200101 | 750 | 850 | 100 | 2,100 | 1,250 |
| Otpadna plastika 170203 | 90 | 50 | -40 | 350 | 300 |
| Otpadni inox 170407 | 0 | 0 | 0 | 58 | 58 |
| Alkalne baterije 160604 | 0 | 15 | 15 | 20 | 5 |
| Otpadni tiskarski tineri 080317* | 0 | 126 | 126 | 130 | 4 |
| Informatička i Tk oprema 200135* | 0 | 63 | 63 | 200 | 137 |
| Elektr. i elektr. Oprema 20136 | 0 | 26 | 26 | 600 | 574 |
| Željezo i čelik 170405 | 0 | 0 | 0 | 1,250 | 1,250 |
| Tekstilni otpad 200111 | | | | 700 | 700 |
| Biorazgradivi otpad iz kuhinja i kantina 20 01 08 | 0 | 24,240 | 24,240 | 3,840 | -20,400 |

Energy – monitoring performance

TOTAL ENERGY CONSUMPTION OF TT HOTELS

Energy consumption trend in 2018. switched to saving. For significantly better achievement investment in advanced energy saving cooling / heating equipment is needed, especially at TUI BLUE Kalamota Island. Until then focus must be on training personnel in energy saving practices.

| 2017 | PAX | | | | ENERGY CONSUMPTION (kW) | | | | |
|--------------|---------------|---------------|---------------|----------------|-------------------------|------------------|------------------|------------------|--------------|
| | SABR | SEM | SKIR | KHA | SABR | SEM | SKIR | KHA | Energy/pax |
| Jan-17 | 0 | 0 | 0 | 0 | 18,528 | 7,362 | 6,477 | 32,367 | #DIV/0! |
| Feb-17 | 0 | 0 | 0 | 0 | 24,117 | 8,655 | 5,190 | 37,962 | #DIV/0! |
| Mar-17 | 0 | 0 | 0 | 0 | 32,169 | 9,964 | 7,623 | 49,756 | #DIV/0! |
| Apr-17 | 0 | 0 | 0 | 0 | 32,052 | 42,847 | 24,951 | 99,850 | #DIV/0! |
| May-17 | 12,067 | 6,186 | 6,953 | 25,206 | 298,700 | 121,270 | 156,924 | 576,894 | 22.89 |
| Jun-17 | 14,977 | 10,044 | 8,101 | 33,122 | 287,004 | 155,102 | 167,814 | 609,920 | 18.41 |
| Jul-17 | 15,926 | 10,550 | 8,679 | 35,155 | 327,897 | 215,624 | 194,031 | 737,552 | 20.98 |
| Aug-17 | 16,190 | 10,703 | 8,539 | 35,432 | 341,072 | 203,452 | 196,036 | 740,560 | 20.90 |
| Sep-17 | 15,223 | 9,943 | 8,386 | 33,552 | 310,523 | 174,657 | 170,060 | 655,240 | 19.53 |
| Oct-17 | 4,174 | 1,352 | 6,309 | 11,835 | 137,942 | 49,064 | 135,670 | 322,676 | 27.26 |
| Nov-17 | 0 | 0 | 0 | 0 | 20,364 | 8,696 | 12,418 | 41,478 | #DIV/0! |
| Dec-17 | 0 | 0 | 0 | 0 | 17,646 | 9,126 | 6,371 | 33,143 | #DIV/0! |
| Total | 78,557 | 48,778 | 46,967 | 174,302 | 1,848,014 | 1,005,819 | 1,083,565 | 3,937,398 | 22.59 |

| 2016 | PAX | | | | ENERGY CONSUMPTION (kW) | | | | |
|--------------|---------------|---------------|---------------|----------------|-------------------------|----------------|------------------|------------------|--------------|
| | SABR | SEM | SKIR | KHA | SABR | SEM | SKIR | KHA | Energy/pax |
| Jan-16 | 0 | 0 | 0 | 0 | 15,333 | 7,803 | 8,745 | 31,881 | #DIV/0! |
| Feb-16 | 0 | 0 | 0 | 0 | 15,333 | 8,067 | 9,754 | 33,154 | #DIV/0! |
| Mar-16 | 0 | 0 | 0 | 0 | 15,333 | 12,964 | 6,749 | 35,046 | #DIV/0! |
| Apr-16 | 0 | 0 | 0 | 0 | 104,608 | 23,336 | 24,803 | 152,747 | #DIV/0! |
| May-16 | 11,874 | 6,262 | 6,268 | 24,404 | 277,087 | 133,926 | 232,858 | 643,871 | 26.38 |
| Jun-16 | 14,934 | 9,869 | 8,084 | 32,887 | 284,334 | 150,277 | 132,010 | 566,621 | 17.23 |
| Jul-16 | 16,200 | 10,628 | 8,774 | 35,602 | 346,866 | 189,220 | 175,762 | 711,848 | 19.99 |
| Aug-16 | 16,118 | 10,693 | 8,623 | 35,434 | 334,104 | 184,771 | 168,071 | 686,946 | 19.39 |
| Sep-16 | 14,732 | 10,058 | 8,368 | 33,158 | 294,557 | 151,619 | 153,662 | 599,838 | 18.09 |
| Oct-16 | 4,783 | 1,307 | 6,677 | 12,767 | 142,999 | 59,996 | 133,572 | 336,567 | 26.36 |
| Nov-16 | 0 | 0 | 0 | 0 | 23,490 | 9,499 | 13,502 | 46,491 | #DIV/0! |
| Dec-16 | 0 | 0 | 0 | 0 | 18,393 | 8,080 | 5,692 | 32,165 | #DIV/0! |
| Total | 78,641 | 48,817 | 46,794 | 174,252 | 1,872,437 | 939,558 | 1,065,180 | 3,877,175 | 22.25 |

| 2018 | PAX | | | | ENERGY CONSUMPTION (kW) | | | | |
|--------------|----------------|---------------|---------------|----------------|-------------------------|----------------|------------------|------------------|--------------|
| | SABR | SEM | SKIR | KHA | SABR | SEM | SKIR | KHA | Energy/pax |
| Jan-18 | 0 | 0 | 0 | 0 | 15,045 | 9,177 | 5,336 | 29,558 | #DIV/0! |
| Feb-18 | 0 | 0 | 0 | 0 | 17,505 | 8,957 | 8,228 | 34,690 | #DIV/0! |
| Mar-18 | 0 | 0 | 0 | 0 | 27,408 | 10,016 | 9,120 | 46,544 | #DIV/0! |
| Apr-18 | 0 | 0 | 0 | 0 | 49,513 | 48,643 | 15,880 | 114,036 | #DIV/0! |
| May-18 | 12,869 | 5,276 | 6,920 | 25,065 | 283,066 | 126,511 | 208,601 | 618,178 | 24.66 |
| Jun-18 | 14,909 | 9,852 | 8,325 | 33,086 | 298,808 | 164,197 | 134,270 | 597,275 | 18.05 |
| Jul-18 | 16,007 | 10,600 | 8,511 | 35,118 | 339,157 | 177,261 | 178,495 | 694,913 | 19.79 |
| Aug-18 | 15,856 | 10,635 | 8,348 | 34,839 | 346,229 | 198,957 | 208,770 | 753,956 | 21.64 |
| Sep-18 | 14,785 | 9,519 | 8,357 | 32,661 | 304,547 | 173,059 | 163,437 | 641,043 | 19.63 |
| Oct-18 | 8,816 | 1,639 | 4,579 | 15,034 | 219,802 | 54,282 | 110,827 | 384,911 | 25.60 |
| Nov-18 | 13,266 | 0 | 0 | 13,266 | 162,462 | 9,933 | 20,269 | 192,664 | 14.52 |
| Dec-18 | 5,330 | 0 | 0 | 5,330 | 95,538 | 9,834 | 7,765 | 113,137 | 21.23 |
| Total | 101,838 | 47,521 | 45,040 | 194,399 | 2,159,080 | 990,827 | 1,070,998 | 4,220,905 | 21.71 |

ELECTRICITY CONSUMPTION TUI BLUE Adriatic Beach 2016-2022

| 2016 | Pax | Total kWh | Gas kWh | Oil kWh | Electr. kWh | Energy/pax |
|--------------|---------------|------------------|----------------|---------------|------------------|--------------|
| Jan-16 | 0 | 15.333 | 0 | 0 | 15.333 | #DIV/0! |
| Feb-16 | 0 | 15.333 | 0 | 0 | 15.333 | #DIV/0! |
| Mar-16 | 0 | 15.333 | 0 | 0 | 15.333 | #DIV/0! |
| Apr-16 | 0 | 95.953 | 12.820 | 41.241 | 41.892 | #DIV/0! |
| May-16 | 11.874 | 268.409 | 12.846 | 41.354 | 214.209 | 22,60 |
| Jun-16 | 14.934 | 285.078 | 15.384 | 0 | 269.694 | 19,09 |
| Jul-16 | 16.200 | 348.354 | 30.768 | 0 | 317.586 | 21,50 |
| Aug-16 | 16.118 | 335.034 | 19.230 | 0 | 315.804 | 20,79 |
| Sep-16 | 14.732 | 296.034 | 30.537 | 0 | 265.497 | 20,09 |
| Oct-16 | 4.783 | 143.310 | 6.423 | 0 | 136.887 | 29,96 |
| Nov-16 | 0 | 23.490 | 0 | 0 | 23.490 | #DIV/0! |
| Dec-16 | 0 | 18.393 | - | - | 18.393 | #DIV/0! |
| Total | 78.641 | 1.860.054 | 128.008 | 82.595 | 1.649.451 | 23,65 |

| 2017 | Pax | Total kWh | Gas kWh | Oil kWh | Electr. kWh | Energy/pax |
|--------------|---------------|------------------|----------------|---------------|------------------|--------------|
| Jan-17 | - | 18.528 | 0 | 0 | 18.528 | #DIV/0! |
| Feb-17 | - | 24.117 | 0 | 0 | 24.117 | #DIV/0! |
| Mar-17 | - | 32.169 | 0 | 0 | 32.169 | #DIV/0! |
| Apr-17 | - | 32.052 | 0 | 0 | 32.052 | #DIV/0! |
| May-17 | 12.067 | 293.315 | 27.614 | 29.880 | 235.821 | 24,31 |
| Jun-17 | 14.977 | 287.748 | 15.384 | 0 | 272.364 | 19,21 |
| Jul-17 | 15.926 | 328.641 | 15.384 | 0 | 313.257 | 20,64 |
| Aug-17 | 16.190 | 342.379 | 27.037 | 0 | 315.342 | 21,15 |
| Sep-17 | 15.223 | 311.143 | 12.820 | 0 | 298.323 | 20,44 |
| Oct-17 | 4.174 | 138.562 | 12.820 | 0 | 125.742 | 33,20 |
| Nov-17 | - | 20.364 | 0 | 0 | 20.364 | #DIV/0! |
| Dec-17 | - | 17.646 | 0 | 0 | 17.646 | #DIV/0! |
| Total | 78.557 | 1.846.665 | 111.060 | 29.880 | 1.705.725 | 23,51 |

| 2018 | Pax | Total kWh | Gas kWh | Oil kWh | Electr. kWh | Energy/pax |
|--------------|----------------|------------------|----------------|----------------|------------------|--------------|
| Jan-18 | - | 19.917 | - | 4.872 | 15.045 | #DIV/0! |
| Feb-18 | - | 27.889 | - | 10.384 | 17.505 | #DIV/0! |
| Mar-18 | - | 38.818 | - | 11.410 | 27.408 | #DIV/0! |
| Apr-18 | - | 55.765 | 12.820 | 10.512 | 32.433 | #DIV/0! |
| May-18 | 12.869 | 288.723 | 15.384 | 18.333 | 255.006 | 22,44 |
| Jun-18 | 14.909 | 319.485 | 15.384 | 21.153 | 282.948 | 21,43 |
| Jul-18 | 16.007 | 359.044 | 28.204 | 19.743 | 311.097 | 22,43 |
| Aug-18 | 15.856 | 366.265 | 15.384 | 20.512 | 330.369 | 23,10 |
| Sep-18 | 14.785 | 322.019 | 15.384 | 17.948 | 288.687 | 21,78 |
| Oct-18 | 8.816 | 227.272 | 15.384 | 9.166 | 202.722 | 25,78 |
| Nov-18 | 13.266 | 165.193 | 15.384 | 1.987 | 147.822 | 12,45 |
| Dec-18 | 5.330 | 96.435 | - | 897 | 95.538 | 18,09 |
| Total | 101.838 | 2.286.825 | 133.328 | 146.917 | 2.006.580 | 22,46 |

| 2019 | Pax | Total kWh | Gas kWh | Oil kWh | Electr. kWh | Energy/pax |
|--------------|----------------|------------------|----------------|--------------|------------------|--------------|
| Jan-19 | 6.830 | 128.823 | 4.872 | 2.779 | 121.173 | 18,86 |
| Feb-19 | 11.766 | 168.612 | 10.384 | 1.244 | 156.984 | 14,33 |
| Mar-19 | 12.904 | 169.192 | 11.410 | - | 157.782 | 13,11 |
| Apr-19 | 11.969 | 149.516 | 10.512 | 757 | 138.246 | 12,49 |
| May-19 | 10.500 | 260.046 | 18.333 | 108 | 241.605 | 24,77 |
| Jun-19 | 15.431 | 307.773 | 21.153 | - | 286.620 | 19,95 |
| Jul-19 | 16.041 | 323.574 | 19.743 | - | 303.831 | 20,17 |
| Aug-19 | 16.213 | 348.595 | 20.512 | 162 | 327.921 | 21,50 |
| Sep-19 | 15.430 | 313.675 | 17.948 | - | 295.727 | 20,33 |
| Oct-19 | 4.783 | 155.512 | 9.166 | - | 146.346 | 32,51 |
| Nov-19 | 0 | 25.498 | 1.987 | - | 23.511 | #DIV/0! |
| Dec-19 | 0 | 25.505 | 897 | - | 24.608 | #DIV/0! |
| Total | 121.867 | 2.376.321 | 146.917 | 5.050 | 2.224.354 | 19,50 |

| 2020 | Pax | Total kWh | Gas kWh | Oil kWh | Electr. kWh | Energy/pax |
|--------------|---------------|------------------|---------------|--------------|------------------|--------------|
| Jan-20 | 0 | 25.258 | - | - | 25.258 | #DIV/0! |
| Feb-20 | 0 | 26.190 | - | - | 26.190 | #DIV/0! |
| Mar-20 | 0 | 24.059 | - | - | 24.059 | #DIV/0! |
| Apr-20 | 0 | 16.717 | - | - | 16.717 | #DIV/0! |
| May-20 | 0 | 24.691 | - | - | 24.691 | #DIV/0! |
| Jun-20 | 1.831 | 143.798 | 5.449 | - | 138.349 | 78,53 |
| Jul-20 | 9.818 | 269.070 | 14.102 | 4.880 | 250.088 | 27,41 |
| Aug-20 | 10.703 | 295.989 | 15.384 | 1.830 | 278.775 | 27,65 |
| Sep-20 | 2.328 | 181.604 | 4.167 | - | 177.437 | 78,01 |
| Oct-20 | 0 | 27.823 | - | - | 27.823 | #DIV/0! |
| Nov-20 | 0 | 22.046 | - | - | 22.046 | #DIV/0! |
| Dec-20 | 0 | 20.458 | - | - | 20.458 | #DIV/0! |
| Total | 24.680 | 1.077.702 | 39.101 | 6.710 | 1.031.891 | 43,67 |

| 2021 | Pax | Total kWh | Gas kWh | Oil kWh | Electr. kWh | Energy/pax |
|--------------|---------------|------------------|---------------|--------------|------------------|--------------|
| Jan-21 | 0 | 22.838 | - | - | 22.838 | #DIV/0! |
| Feb-21 | 0 | 23.454 | - | - | 23.454 | #DIV/0! |
| Mar-21 | 0 | 26.229 | - | - | 26.229 | #DIV/0! |
| Apr-21 | 0 | 35.091 | - | - | 35.091 | #DIV/0! |
| May-21 | 539 | 107.882 | 3.923 | 4.980 | 98.979 | 200,15 |
| Jun-21 | 2.339 | 221.157 | 13.410 | - | 207.747 | 94,55 |
| Jul-21 | 13.509 | 319.337 | 15.038 | - | 304.299 | 23,64 |
| Aug-21 | 15.347 | 331.970 | 16.576 | - | 315.394 | 21,63 |
| Sep-21 | 15.285 | 279.363 | 16.512 | - | 262.851 | 18,28 |
| Oct-21 | 3.143 | 130.482 | 9.589 | - | 120.893 | 41,52 |
| Nov-21 | 0 | 33.567 | - | - | 33.567 | #DIV/0! |
| Dec-21 | 0 | 27.843 | - | - | 27.843 | #DIV/0! |
| Total | 50.162 | 1.559.213 | 75.048 | 4.980 | 1.479.185 | 31,08 |

| 2022 | Pax | Total kWh | Gas kWh | Oil kWh | Electr. kWh | Energy/pax |
|--------------|---------------|------------------|--------------|----------|------------------|--------------|
| Jan-22 | 0 | 28.833 | 487 | - | 28.346 | #DIV/0! |
| Feb-22 | 0 | 29.155 | 14 | - | 29.141 | #DIV/0! |
| Mar-22 | 0 | 30.185 | 28 | - | 30.157 | #DIV/0! |
| Apr-22 | 0 | 45.349 | 83 | - | 45.266 | #DIV/0! |
| May-22 | 10.857 | 231.311 | 1.270 | - | 230.041 | 21,31 |
| Jun-22 | 14.949 | 273.703 | 1.276 | - | 272.427 | 18,31 |
| Jul-22 | 16.059 | 308.631 | 962 | - | 307.669 | 19,22 |
| Aug-22 | 16.399 | 295.691 | 982 | - | 294.709 | 18,03 |
| Sep-22 | | - | - | - | - | #DIV/0! |
| Oct-22 | | - | - | - | - | #DIV/0! |
| Nov-22 | 0 | - | - | - | - | #DIV/0! |
| Dec-22 | 0 | - | - | - | - | #DIV/0! |
| Total | 58.264 | 1.242.858 | 5.102 | 0 | 1.237.756 | 21,33 |

HOTEL TUI Blue Adriatic Beach Resort Report last updated on: 15/02/2022

| | Occupancy | | | Totals | | | | | | Energy Consumption per Guest | | | | | |
|-----------|-----------|-------|-------|---------|-----------|---------|-----------|---------|-----------|------------------------------|-------------|--------------|-------------|---------------|--------------|
| | 2019 | 2020 | 2021 | 2019 | | 2019 | | 2021 | | 2019 | | 2020 | | 2021 | |
| | | | | kW | € | kW | € | kW | € | kW | € | kW | € | kW | € |
| January | 6830 | 0 | 0 | 189249 | 10.333,07 | 128823 | 13.334,88 | 22838 | 2.259,98 | 27,71 | 1,51 | 18,86 | 1,95 | #DIV/0! | #DIV/0! |
| February | 11766 | 0 | 0 | 194926 | 12.656,51 | 168612 | 14.375,55 | 23454 | 2.335,25 | 16,57 | 1,08 | 14,33 | 1,22 | #DIV/0! | #DIV/0! |
| March | 12904 | 0 | 0 | 168640 | 12.420,80 | 169192 | 13.077,02 | 26229 | 2.597,03 | 13,07 | 0,96 | 13,11 | 1,01 | #DIV/0! | #DIV/0! |
| April | 11969 | 0 | 0 | 165330 | 10.936,17 | 149516 | 12.260,73 | 35091 | 3.871,39 | 13,81 | 0,91 | 12,49 | 1,02 | #DIV/0! | #DIV/0! |
| May | 10500 | 0 | 539 | 261491 | 18.778,49 | 260046 | 19.881,93 | 98979 | 10.095,78 | 24,90 | 1,79 | 24,77 | 1,89 | 183,63 | 18,73 |
| June | 15431 | 1831 | 2339 | 345954 | 24.572,55 | 307773 | 25.672,55 | 207747 | 20.695,13 | 22,42 | 1,59 | 19,95 | 1,66 | 88,82 | 8,85 |
| July | 16041 | 9818 | 13509 | 283415 | 25.369,16 | 323574 | 26.406,09 | 304299 | 29.364,57 | 17,67 | 1,58 | 20,17 | 1,65 | 22,53 | 2,17 |
| August | 16213 | 10703 | 15347 | 329945 | 30.573,64 | 348595 | 31.680,95 | 315394 | 30.415,27 | 20,35 | 1,89 | 21,50 | 1,95 | 20,55 | 1,98 |
| September | 15430 | 2328 | 15285 | 335422 | 25.994,02 | 313675 | 26.820,95 | 262851 | 25.582,48 | 21,74 | 1,68 | 20,33 | 1,74 | 17,20 | 1,67 |
| October | 4783 | 0 | 3143 | 155069 | 12.715,71 | 155512 | 13.138,04 | 120893 | 12.924,98 | 32,42 | 2,66 | 32,51 | 2,75 | 38,46 | 4,11 |
| November | 0 | 0 | 0 | 25402 | 2.293,65 | 25498 | 2.385,21 | 33567 | 3.772,71 | #DIV/0! | #DIV/0! | #DIV/0! | #DIV/0! | #DIV/0! | #DIV/0! |
| December | 0 | 0 | 0 | 24608 | 2.359,88 | 25505 | 2.401,23 | 27843 | 2.780,90 | #DIV/0! | #DIV/0! | #DIV/0! | #DIV/0! | #DIV/0! | #DIV/0! |
| Total | 121867 | 24680 | 50162 | 2479451 | | 2376321 | | 1479185 | | 20 | | 96 | | 29 | |
| | | | | | | | | | | (kWh/pax) | | (kWh/pax) | | (kWh/pax) | |

ELECTRICITY CONSUMPTION TBM 2016-2022

| 2016 | Pax | Total kWh | Gas kWh | Electr. kWh | Total energy/pax |
|--------------|---------------|----------------|---------------|----------------|------------------|
| Jan-16 | - | 7.803 | - | 7.803 | #DIV/0! |
| Feb-16 | - | 8.067 | - | 8.067 | #DIV/0! |
| Mar-16 | - | 12.964 | - | 12.964 | #DIV/0! |
| Apr-16 | - | 23.336 | - | 23.336 | #DIV/0! |
| May-16 | 6.262 | 133.926 | 24.388 | 109.538 | 21,39 |
| Jun-16 | 9.869 | 150.277 | 12.212 | 138.065 | 15,23 |
| Jul-16 | 10.628 | 189.220 | 12.005 | 177.215 | 17,80 |
| Aug-16 | 10.693 | 184.771 | 12.200 | 172.571 | 17,28 |
| Sep-16 | 10.058 | 151.619 | - | 151.619 | 15,07 |
| Oct-16 | 1.307 | 59.996 | 6.124 | 53.872 | 45,90 |
| Nov-16 | - | 9.499 | - | 9.499 | #DIV/0! |
| Dec-16 | - | 8.080 | - | 8.080 | #DIV/0! |
| Total | 48.817 | 939.558 | 66.929 | 872.629 | 19,25 |

| 2018 | Pax | Total kWh | Gas kWh | Electr. kWh | Total energy/pax |
|--------------|---------------|----------------|---------------|----------------|------------------|
| Jan-18 | - | 9.177 | - | 9.177 | #DIV/0! |
| Feb-18 | - | 8.957 | - | 8.957 | #DIV/0! |
| Mar-18 | - | 10.016 | - | 10.016 | #DIV/0! |
| Apr-18 | - | 48.643 | 18.300 | 30.343 | #DIV/0! |
| May-18 | 5.276 | 126.511 | - | 126.511 | 23,98 |
| Jun-18 | 9.852 | 164.197 | 12.200 | 151.997 | 16,67 |
| Jul-18 | 10.600 | 177.261 | - | 177.261 | 16,72 |
| Aug-18 | 10.635 | 198.957 | 12.224 | 186.733 | 18,71 |
| Sep-18 | 9.519 | 173.059 | 12.200 | 160.859 | 18,18 |
| Oct-18 | 1.639 | 54.282 | - | 54.282 | 33,12 |
| Nov-18 | - | 9.933 | - | 9.933 | #DIV/0! |
| Dec-18 | - | 9.834 | - | 9.834 | #DIV/0! |
| Total | 47.521 | 990.827 | 54.924 | 935.903 | 20,85 |

| 2017 | Pax | Total kWh | Gas kWh | Electr. kWh | Total energy/pax |
|--------------|---------------|------------------|----------------|----------------|------------------|
| Jan-17 | - | 7.362 | - | 7.362 | #DIV/0! |
| Feb-17 | - | 8.655 | - | 8.655 | #DIV/0! |
| Mar-17 | - | 9.964 | - | 9.964 | #DIV/0! |
| Apr-17 | - | 42.847 | 11.200 | 31.647 | #DIV/0! |
| May-17 | 6.186 | 121.270 | - | 121.270 | 19,60 |
| Jun-17 | 10.044 | 155.102 | 12.200 | 142.902 | 15,44 |
| Jul-17 | 10.550 | 215.624 | 48.800 | 166.824 | 20,44 |
| Aug-17 | 10.703 | 203.452 | 34.209 | 169.243 | 19,01 |
| Sep-17 | 9.943 | 174.657 | 36.637 | 138.020 | 17,57 |
| Oct-17 | 1.352 | 49.064 | - | 49.064 | 36,29 |
| Nov-17 | - | 8.696 | - | 8.696 | #DIV/0! |
| Dec-17 | - | 9.126 | - | 9.126 | #DIV/0! |
| Total | 48.778 | 1.005.819 | 143.046 | 862.773 | 20,62 |

| 2019 | Pax | Total kWh | Gas kWh | Electr. kWh | Total energy/pax |
|--------------|---------------|----------------|---------------|----------------|------------------|
| Jan-19 | - | 10.101 | - | 10.101 | #DIV/0! |
| Feb-19 | - | 8.709 | - | 8.709 | #DIV/0! |
| Mar-19 | - | 10.157 | - | 10.157 | #DIV/0! |
| Apr-19 | 252 | 48.455 | 18.300 | 30.155 | 192,28 |
| May-19 | 5.302 | 103.366 | - | 103.366 | 19,50 |
| Jun-19 | 9.636 | 153.537 | 12.200 | 141.337 | 15,93 |
| Jul-19 | 10.524 | 160.767 | - | 160.767 | 15,28 |
| Aug-19 | 10.782 | 193.183 | 12.224 | 180.959 | 17,92 |
| Sep-19 | 10.281 | 162.271 | 12.200 | 150.071 | 15,78 |
| Oct-19 | 1.469 | 50.016 | - | 50.016 | 34,05 |
| Nov-19 | - | 10.386 | - | 10.386 | #DIV/0! |
| Dec-19 | - | 10.547 | - | 10.547 | #DIV/0! |
| Total | 48.246 | 921.495 | 54.924 | 866.571 | 19,10 |

| 2020 | Pax | Total kWh | Gas kWh | Electr. kWh | Total energy/pax |
|--------------|----------|----------------|----------|----------------|------------------|
| Jan-20 | - | 9.686 | - | 9.686 | #DIV/0! |
| Feb-20 | - | 12.181 | - | 12.181 | #DIV/0! |
| Mar-20 | - | 11.673 | - | 11.673 | #DIV/0! |
| Apr-20 | - | 9.789 | - | 9.789 | #DIV/0! |
| May-20 | - | 11.214 | - | 11.214 | #DIV/0! |
| Jun-20 | - | 9.414 | - | 9.414 | #DIV/0! |
| Jul-20 | - | 9.329 | - | 9.329 | #DIV/0! |
| Aug-20 | - | 9.398 | - | 9.398 | #DIV/0! |
| Sep-20 | - | 8.974 | - | 8.974 | #DIV/0! |
| Oct-20 | - | 8.824 | - | 8.824 | #DIV/0! |
| Nov-20 | - | 11.404 | - | 11.404 | #DIV/0! |
| Dec-20 | - | 12.978 | - | 12.978 | #DIV/0! |
| Total | 0 | 124.864 | 0 | 124.864 | #DIV/0! |

| 2021 | Pax | Total kWh | Gas kWh | Electr. kWh | Total energy/pax |
|--------------|---------------|----------------|---------------|----------------|------------------|
| Jan-21 | 0 | 13.725 | - | 13.725 | #DIV/0! |
| Feb-21 | 0 | 14.218 | - | 14.218 | #DIV/0! |
| Mar-21 | 0 | 15.262 | - | 15.262 | #DIV/0! |
| Apr-21 | 0 | 13.202 | - | 13.202 | #DIV/0! |
| May-21 | 0 | 12.660 | - | 12.660 | #DIV/0! |
| Jun-21 | 0 | 26.299 | - | 26.299 | #DIV/0! |
| Jul-21 | 7.934 | 160.921 | 4.577 | 156.344 | 20,28 |
| Aug-21 | 9.858 | 185.535 | 10.788 | 174.747 | 18,82 |
| Sep-21 | 8.688 | 148.977 | 4.577 | 144.400 | 17,15 |
| Oct-21 | 0 | 40.280 | 981 | 39.299 | #DIV/0! |
| Nov-21 | 0 | 14.525 | - | 14.525 | #DIV/0! |
| Dec-21 | 0 | 11.705 | - | 11.705 | #DIV/0! |
| Total | 26.480 | 657.308 | 20.922 | 636.386 | 24,82 |

| 2022 | Pax | Total kWh | Gas kWh | Electr. kWh | Total energy/p |
|--------------|---------------|----------------|---------------|----------------|----------------|
| Jan-22 | 0 | 12.794 | - | 12.794 | #DIV/0! |
| Feb-22 | 0 | 12.094 | - | 12.094 | #DIV/0! |
| Mar-22 | 0 | 14.349 | 1.308 | 13.041 | #DIV/0! |
| Apr-22 | 0 | 30.862 | 490 | 30.372 | #DIV/0! |
| May-22 | 4.088 | 116.718 | 2.452 | 114.266 | 28,55 |
| Jun-22 | 8.959 | 155.440 | 4.577 | 150.863 | 17,35 |
| Jul-22 | 10.279 | 176.085 | 4.413 | 171.672 | 17,13 |
| Aug-22 | 10.694 | 3.106 | 3.106 | - | 0,29 |
| Sep-22 | 0 | - | - | - | #DIV/0! |
| Oct-22 | 0 | - | - | - | #DIV/0! |
| Nov-22 | 0 | - | - | - | #DIV/0! |
| Dec-22 | 0 | - | - | - | #DIV/0! |
| Total | 34.020 | 521.448 | 16.346 | 505.102 | 15,33 |

HOTEL TUI Blue Makarska

Report last updated on: 15/02/2022

| | Occupancy | | | Totals | | | | | | Energy Consumption per Guest | | | | | |
|-----------|-----------|------|------|--------|----------|-------|----------|--------|-----------|------------------------------|-------------|---------|---------|--------------|-------------|
| | 2019 | 2020 | 2021 | 2019 | | 2020 | | 2021 | | 2019 | | 2020 | | 2021 | |
| | | | | kW | € | kW | € | kW | € | kW | € | kW | € | kW | € |
| January | 0 | 0 | 0 | 10101 | 976,04 | 9686 | 1.051,07 | 13725 | 1.371,94 | #DIV/0! | #DIV/0! | #DIV/0! | #DIV/0! | #DIV/0! | #DIV/0! |
| February | 0 | 0 | 0 | 8709 | 872,39 | 12181 | 1.350,92 | 14218 | 1.437,61 | #DIV/0! | #DIV/0! | #DIV/0! | #DIV/0! | #DIV/0! | #DIV/0! |
| March | 0 | 0 | 0 | 10157 | 1035,6 | 11673 | 1.300,24 | 15262 | 1.535,43 | #DIV/0! | #DIV/0! | #DIV/0! | #DIV/0! | #DIV/0! | #DIV/0! |
| April | 252 | 0 | 0 | 30155 | 4580,17 | 9789 | 1.040,90 | 13202 | 1.310,56 | 119,66 | 18,18 | #DIV/0! | #DIV/0! | #DIV/0! | #DIV/0! |
| May | 5302 | 0 | 0 | 103366 | 10341,6 | 11214 | 1.260,68 | 12660 | 1.192,35 | 19,50 | 1,95 | #DIV/0! | #DIV/0! | #DIV/0! | #DIV/0! |
| June | 9636 | 0 | 0 | 141337 | 14710,21 | 9414 | 1.126,48 | 26299 | 3.234,57 | 14,67 | 1,53 | #DIV/0! | #DIV/0! | #DIV/0! | #DIV/0! |
| July | 10524 | 0 | 7934 | 160767 | 15792,73 | 9329 | 893,15 | 156344 | 15.414,71 | 15,28 | 1,50 | #DIV/0! | #DIV/0! | 19,71 | 1,94 |
| August | 10782 | 0 | 9858 | 180959 | 18493,21 | 9398 | 894,92 | 174747 | 17.114,08 | 16,78 | 1,72 | #DIV/0! | #DIV/0! | 17,73 | 1,74 |
| September | 10281 | 0 | 8688 | 150071 | 15638,93 | 8974 | 857,84 | 144400 | 14.518,72 | 14,60 | 1,52 | #DIV/0! | #DIV/0! | 16,62 | 1,67 |
| October | 1469 | 0 | 0 | 50016 | 5628,78 | 8824 | 844,26 | 39299 | 4.429,18 | 34,05 | 3,83 | #DIV/0! | #DIV/0! | #DIV/0! | #DIV/0! |
| November | 0 | 0 | 0 | 10386 | 994,93 | 11404 | 1.252,96 | 14525 | 1.401,93 | #DIV/0! | #DIV/0! | #DIV/0! | #DIV/0! | #DIV/0! | #DIV/0! |
| December | 0 | 0 | 0 | 10547 | 1003,75 | 12978 | 1.311,87 | 11705 | 1.139,38 | #DIV/0! | #DIV/0! | #DIV/0! | #DIV/0! | #DIV/0! | #DIV/0! |

HOTEL TUI BLUE Kalamota Island Resort Report last updated on: 15/02/2022

| | Occupancy | | | Totals | | | | | | Energy Consumption per Guest | | | | | |
|-----------|-----------|------|------|---------|-----------|---------|-----------|---------|-----------|------------------------------|-------------|--------------|-------------|--------------|--------------|
| | 2018 | 2019 | 2020 | 2018 | | 2019 | | 2020 | | 2018 | | 2019 | | 2020 | |
| | | | | kW | € | kW | € | kW | € | kW | € | kW | € | kW | € |
| January | 0 | 0 | 0 | 5,336 | 731.73 | 9,452 | 660.13 | 7,196 | 903.86 | #DIV/0! | #DIV/0! | #DIV/0! | #DIV/0! | #DIV/0! | #DIV/0! |
| February | 0 | 0 | 0 | 8,228 | 605.33 | 11,209 | 1,143.33 | 7,666 | 1,086.35 | #DIV/0! | #DIV/0! | #DIV/0! | #DIV/0! | #DIV/0! | #DIV/0! |
| March | 0 | 0 | 0 | 9,120 | 913.07 | 14,171 | 968.53 | 8,917 | 1,336.27 | #DIV/0! | #DIV/0! | #DIV/0! | #DIV/0! | #DIV/0! | #DIV/0! |
| April | 0 | 0 | 0 | 15,880 | 2,637.60 | 17,987 | 1,666.80 | 7,132 | 1,882.05 | #DIV/0! | #DIV/0! | #DIV/0! | #DIV/0! | #DIV/0! | #DIV/0! |
| May | 6920 | 6956 | 0 | 187,097 | 11,491.58 | 143,182 | 13,250.48 | 7,667 | 8,459.45 | 27.04 | 1.66 | 20.58 | 1.90 | #DIV/0! | #DIV/0! |
| June | 8325 | 6995 | 0 | 128,894 | 12,424.72 | 158,919 | 10,996.97 | 13,133 | 10,005.67 | 15.48 | 1.49 | 22.72 | 1.57 | #DIV/0! | #DIV/0! |
| July | 8511 | 8303 | 1825 | 167,743 | 14,524.59 | 175,494 | 13,500.61 | 87,913 | 11,823.08 | 19.71 | 1.71 | 21.14 | 1.63 | 48.17 | 6.48 |
| August | 8348 | 8626 | 2967 | 192,642 | 14,828.16 | 180,245 | 15,431.95 | 112,536 | 12,789.55 | 23.08 | 1.78 | 20.90 | 1.79 | 37.93 | 4.31 |
| September | 8357 | 7672 | 486 | 152,685 | 13,187.62 | 160,412 | 12,840.38 | 46,891 | 10,050.89 | 18.27 | 1.58 | 20.91 | 1.67 | 96.48 | 20.68 |
| October | 4579 | 5644 | 0 | 105,451 | 11,280.24 | 136,149 | 9,402.47 | 5,815 | 8,234.63 | 23.03 | 2.46 | 24.12 | 1.67 | #DIV/0! | #DIV/0! |
| November | 0 | 0 | 0 | 20,269 | 1,248.53 | 16,984 | 2,124.04 | 4,399 | 1,059.53 | #DIV/0! | #DIV/0! | #DIV/0! | #DIV/0! | #DIV/0! | #DIV/0! |
| December | 0 | 0 | 0 | 7,765 | 634.40 | 8,115 | 791.54 | 4,362 | 758.78 | #DIV/0! | #DIV/0! | #DIV/0! | #DIV/0! | #DIV/0! | #DIV/0! |

WATER CONSUMPTION ANALYSIS

THE WATER CONSUMPTION TREND DETERIORATED IN 2018 MAINLY FROM THE REASON OF CONSUMPTION AT TUI BLUE KALAMOTA ISLAND(28.4% INCREASE vs 2017.) WHERE WE EXPERIENCED MAJOR LEAKAGE IN POOL INSTALLATIONS WHICH COULDN'T BE RESOLVED DURING SEASON AND WE HAD TO SUFFER MAJOR LOSSES OF WATER. THERE WERE ANOTHER MAJOR ISSUE WITH LEAKAGE AT TUI BLUE KALAMOTA AND IT WAS BREAKAGE OF THE MAIN SUPPLY PIPE WHICH HAPPENED DURING WINTER BREAK.

| 2016 | | | | | CONSUMPTION | | | | | COST (EUR) | | | | |
|--------|--------|--------|---------|--------|-------------|-------|-------|-------|------------|------------|----------|----------|--------------|-----------|
| SABR | SEM | SKIR | KHA | Month | SABR | SEM | SKIR | KHA | liters/pax | SABR | SEM | SKIR | KHA | (EUR)/pax |
| 0 | 0 | 0 | 0 | Jan-16 | 0 | 200 | 4 | 204 | #DIV/0! | 20.98 | 379.64 | 35.60 | 436.21 | #DIV/0! |
| 0 | 0 | 0 | 0 | Feb-16 | 1 | 24 | 13 | 38 | #DIV/0! | 22.46 | 57.86 | 57.33 | 137.66 | #DIV/0! |
| 0 | 0 | 0 | 0 | Mar-16 | 534 | 22 | 2 | 558 | #DIV/0! | 1,032.87 | 54.21 | 30.67 | 1,117.74 | #DIV/0! |
| 0 | 0 | 0 | 0 | Apr-16 | 1336 | 205 | 61 | 1602 | #DIV/0! | 2,552.61 | 388.78 | 173.60 | 3,114.99 | #DIV/0! |
| 11,874 | 6,262 | 6,268 | 24,404 | May-16 | 4853 | 2042 | 794 | 7689 | 315 | 9,216.68 | 3,747.18 | 1,600.53 | 14,564.39 | 0.60 |
| 14,934 | 9,869 | 8,084 | 32,887 | Jun-16 | 6975 | 2233 | 2956 | 12164 | 370 | 13,220.24 | 4,096.50 | 7,189.60 | 24,506.34 | 0.75 |
| 16,200 | 10,628 | 8,774 | 35,602 | Jul-16 | 7428 | 3245 | 1151 | 11824 | 332 | 14,013.55 | 5,946.71 | 2,816.67 | 22,776.93 | 0.64 |
| 16,118 | 10,693 | 8,623 | 35,434 | Aug-16 | 9409 | 3932 | 3355 | 16696 | 471 | 17,747.48 | 7,202.73 | 8,156.13 | 33,106.35 | 0.93 |
| 14,732 | 10,058 | 8,368 | 33,158 | Sep-16 | 8251 | 3342 | 3564 | 15157 | 457 | 15,629.63 | 6,123.73 | 8,662.53 | 30,415.89 | 0.92 |
| 4,783 | 1,307 | 6,677 | 12,767 | Oct-16 | 2888 | 1415 | 2510 | 6813 | 534 | 5,492.32 | 2,600.86 | 6,108.93 | 14,202.12 | 1.11 |
| 0 | 0 | 0 | 0 | Nov-16 | 324 | 156 | 22 | 502 | #DIV/0! | 634.93 | 299.15 | 79.07 | 1,013.15 | #DIV/0! |
| 0 | 0 | 0 | 0 | Dec-16 | 225 | 87 | 10 | 322 | #DIV/0! | 355.81 | 183.75 | 50.00 | 589.56 | #DIV/0! |
| 78,641 | 48,817 | 46,794 | 174,252 | TOTAL | 42224 | 16903 | 14442 | 73569 | 422 | € 79,940 | € 31,081 | € 34,961 | € 145,981.34 | 0.84 |

| 2017 | | | | | CONSUMPTION | | | | | COST (EUR) | | | | |
|--------|--------|--------|---------|--------|-------------|-------|-------|-------|------------|------------|----------|----------|--------------|-----------|
| SABR | SEM | SKIR | KHA | Month | SABR | SEM | SKIR | KHA | liters/pax | SABR | SEM | SKIR | KHA | (EUR)/pax |
| 0 | 0 | 0 | 0 | Jan-17 | 78 | 44 | 747 | 869 | #DIV/0! | 137.05 | 94.43 | 1,104.53 | 1,336.01 | #DIV/0! |
| 0 | 0 | 0 | 0 | Feb-17 | 90 | 49 | 9 | 148 | #DIV/0! | 154.91 | 103.57 | 39.87 | 298.35 | #DIV/0! |
| 0 | 0 | 0 | 0 | Mar-17 | 283 | 65 | 12 | 360 | #DIV/0! | 442.12 | 132.82 | 44.13 | 619.07 | #DIV/0! |
| 0 | 0 | 0 | 0 | Apr-17 | 786 | 41 | 81 | 908 | #DIV/0! | 1,190.65 | 65.13 | 143.73 | 1,399.51 | #DIV/0! |
| 12,067 | 6,186 | 6,953 | 25,206 | May-17 | 5782 | 2417 | 650 | 8849 | 351 | 8,625.36 | 4,432.67 | 964.53 | 14,022.56 | 0.56 |
| 14,977 | 10,044 | 8,101 | 33,122 | Jun-17 | 5605 | 3113 | 2298 | 11016 | 333 | 8,361.73 | 5,705.23 | 3,343.60 | 17,410.56 | 0.53 |
| 15,926 | 10,550 | 8,679 | 35,155 | Jul-17 | 6352 | 3093 | 3750 | 13195 | 375 | 9,473.33 | 5,668.73 | 5,438.27 | 20,580.32 | 0.59 |
| 16,190 | 10,703 | 8,539 | 35,432 | Aug-17 | 6429 | 4240 | 2907 | 13576 | 383 | 9,587.73 | 7,765.63 | 4,222.13 | 21,575.49 | 0.61 |
| 15,223 | 9,943 | 8,386 | 33,552 | Sep-17 | 4573 | 3407 | 2421 | 10401 | 310 | 6,825.73 | 6,242.73 | 3,519.60 | 16,588.06 | 0.49 |
| 4,174 | 1,352 | 6,309 | 11,835 | Oct-17 | 2514 | 1085 | 2708 | 6307 | 533 | 3,761.87 | 1,997.53 | 3,935.07 | 9,694.46 | 0.82 |
| 0 | 0 | 0 | 0 | Nov-17 | 133 | 0 | 1179 | 1312 | #DIV/0! | 218.67 | 13.98 | 1,727.73 | 1,960.39 | #DIV/0! |
| 0 | 0 | 0 | 0 | Dec-17 | 49 | 264 | 1019 | 1332 | #DIV/0! | 93.60 | 496.46 | 1,498.27 | 2,088.33 | #DIV/0! |
| 78,557 | 48,778 | 46,967 | 174,302 | TOTAL | 32674 | 17818 | 17781 | 68273 | 392 | € 48,873 | € 32,719 | € 25,981 | € 107,573.11 | 0.62 |

| 2018 | | | | | CONSUMPTION | | | | | COST (EUR) | | | | |
|---------|--------|--------|---------|--------|-------------|-------|-------|-------|------------|------------|----------|----------|--------------|-----------|
| SABR | SEM | SKIR | KHA | Month | SABR | SEM | SKIR | KHA | liters/pax | SABR | SEM | SKIR | KHA | (EUR)/pax |
| 0 | 0 | 0 | 0 | Jan-18 | 13 | 27 | 0 | 40 | #DIV/0! | 33.75 | 158.57 | 20.44 | 212.77 | #DIV/0! |
| 0 | 0 | 0 | 0 | Feb-18 | 110 | 90 | 0 | 200 | #DIV/0! | 170.20 | 155.17 | 20.44 | 345.82 | #DIV/0! |
| 0 | 0 | 0 | 0 | Mar-18 | 79 | 82 | 3 | 164 | #DIV/0! | 126.59 | 144.97 | 23.85 | 295.41 | #DIV/0! |
| 0 | 0 | 0 | 0 | Apr-18 | 553 | 442 | 3708 | 4703 | #DIV/0! | 793.35 | 757.42 | 5,377.60 | 6,928.37 | #DIV/0! |
| 12,869 | 5,276 | 6,920 | 25,065 | May-18 | 6366 | 2152 | 1105 | 9623 | 384 | 8,970.32 | 3,670.77 | 1,622.40 | 14,263.49 | 0.57 |
| 14,909 | 9,852 | 8,325 | 33,086 | Jun-18 | 6663 | 2785 | 2565 | 12013 | 363 | 9,388.09 | 4,746.87 | 2,552.19 | 16,687.15 | 0.50 |
| 16,007 | 10,600 | 8,511 | 35,118 | Jul-18 | 5148 | 3081 | 2950 | 11179 | 318 | 7,256.99 | 5,250.07 | 2,929.49 | 15,436.55 | 0.44 |
| 15,856 | 10,635 | 8,348 | 34,839 | Aug-18 | 7141 | 3974 | 3759 | 14874 | 427 | 10,060.47 | 6,768.17 | 3,849.08 | 20,677.73 | 0.59 |
| 14,785 | 9,519 | 8,357 | 32,661 | Sep-18 | 5907 | 2960 | 3443 | 12310 | 377 | 8,327.74 | 5,044.37 | 3,413.55 | 16,785.67 | 0.51 |
| 8,816 | 1,639 | 4,579 | 15,034 | Oct-18 | 2672 | 1487 | 3044 | 7203 | 479 | 3,777.17 | 2,540.27 | 3,020.22 | 9,337.67 | 0.62 |
| 13,266 | 0 | 0 | 13,266 | Nov-18 | 2035 | 270 | 1587 | 3892 | 293 | 2,881.13 | 471.37 | 1,575.70 | 4,928.20 | 0.37 |
| 5,330 | 0 | 0 | 5,330 | Dec-18 | 918 | 78 | 661 | 1657 | 311 | 1,309.88 | 144.97 | 668.22 | 2,123.08 | 0.40 |
| 101,838 | 47,521 | 45,040 | 194,399 | TOTAL | 37605 | 17428 | 22825 | 77858 | 401 | € 53,096 | € 29,853 | € 25,073 | € 108,021.90 | 0.56 |

WATER CONSUMPTIONS IN TT HOTELS - TBAB

| 2016 | | | | CONSUMPTION | | | | | | | | COST | | | | | | | | |
|--------|---------------|---------------|--------|-------------|-----------------|------|------|------|------|------|----------|-----------------|-----------|----------|-----------|----------|--------|------------|---------------|---------|
| | | | | Total | Per water meter | | | | | | Per pax | Per water meter | | | | | | Total | Total | Per pax |
| PAX | Total income | GOP | Month | 1+2+3+4+5+6 | No.1 | No.2 | No.3 | No.4 | No.5 | No.6 | (liters) | KN - 1 | KN - 2 | KN - 3 | KN - 4 | KN - 5 | KN - 6 | (KUNA) | (EUR) | (EUR) |
| 0 | 65.454 | -347.317 | Jan-16 | 0 | 0 | 0 | 0 | 0 | 0 | 0 | #DIV/0! | 26 kn | 26 kn | 26 kn | 26 kn | 26 kn | 26 kn | 157 kn | 20,98 | #DIV/0! |
| 0 | 663.500 | -391.129 | Feb-16 | 1 | 1 | 0 | 0 | 0 | 0 | 0 | #DIV/0! | 37 kn | 26 kn | 26 kn | 26 kn | 26 kn | 26 kn | 168 kn | 22,46 | #DIV/0! |
| 0 | 32.229 | -382.342 | Mar-16 | 534 | 0 | 168 | 51 | 126 | 189 | 0 | #DIV/0! | 26 kn | 2.414 kn | 751 kn | 1.817 kn | 2.712 kn | 26 kn | 7.747 kn | 1.032,87 | #DIV/0! |
| 0 | 197.597 | -970.502 | Apr-16 | 1336 | 0 | 937 | 66 | 196 | 137 | 0 | #DIV/0! | 26 kn | 13.343 kn | 964 kn | 2.812 kn | 1.973 kn | 26 kn | 19.145 kn | 2.552,61 | #DIV/0! |
| 11.874 | 6.737.077 | 3.082.385 | May-16 | 4853 | 1 | 945 | 0 | 3673 | 234 | 0 | 409 | 37 kn | 13.457 kn | 26 kn | 52.227 kn | 3.352 kn | 26 kn | 69.125 kn | 9.216,68 | 0,78 |
| 14.934 | 8.565.550 | 4.109.245 | Jun-16 | 6975 | 44 | 1333 | 372 | 5060 | 166 | 0 | 467 | 517 kn | 18.971 kn | 5.313 kn | 71.939 kn | 2.385 kn | 26 kn | 99.152 kn | 13.220,24 | 0,89 |
| 16.200 | 9.543.488 | 4.568.402 | Jul-16 | 7428 | 204 | 962 | 166 | 5952 | 144 | 0 | 459 | 2.303 kn | 13.698 kn | 2.385 kn | 84.616 kn | 2.073 kn | 26 kn | 105.102 kn | 14.013,55 | 0,87 |
| 16.118 | 9.140.943 | 5.006.488 | Aug-16 | 9409 | 253 | 1750 | 301 | 6968 | 137 | 0 | 584 | 2.850 kn | 24.897 kn | 4.304 kn | 99.055 kn | 1.973 kn | 26 kn | 133.106 kn | 17.747,48 | 1,10 |
| 14.732 | 8.165.539 | 4.069.771 | Sep-16 | 8251 | 65 | 1934 | 193 | 5907 | 152 | 0 | 560 | 752 kn | 27.512 kn | 2.769 kn | 83.977 kn | 2.186 kn | 26 kn | 117.222 kn | 15.629,63 | 1,06 |
| 4.783 | 2.567.361 | 318.397 | Oct-16 | 2888 | 3 | 408 | 52 | 2278 | 147 | 0 | 604 | 60 kn | 5.825 kn | 765 kn | 32.401 kn | 2.115 kn | 26 kn | 41.192 kn | 5.492,32 | 1,15 |
| 0 | 79.282 | -634.419 | Nov-16 | 324 | 0 | 107 | 23 | 41 | 153 | 0 | #DIV/0! | 26 kn | 1.547 kn | 353 kn | 609 kn | 2.201 kn | 26 kn | 4.762 kn | 634,93 | #DIV/0! |
| 0 | 216.035 | -843.993 | Dec-16 | 225 | 0 | 151 | 18 | 31 | 25 | 0 | #DIV/0! | 26 kn | 1.712 kn | 227 kn | 372 kn | 305 kn | 26 kn | 2.669 kn | 355,81 | #DIV/0! |
| 78.641 | 45.974.054 kn | 17.584.986 kn | TOTAL | 42224 | | | | | | | 537 | | | | | | | 599.547 kn | 79.939,57 EUR | 1,02 |

| 2017 | | | | CONSUMPTION | | | | | | | | COST | | | | | | | | |
|--------|---------------|---------------|--------|-------------|-----------------|------|------|------|------|------|----------|-----------------|-----------|----------|-----------|----------|--------|------------|---------------|---------|
| | | | | Total | Per water meter | | | | | | Per pax | Per water meter | | | | | | Total | Total | Per pax |
| PAX | Total income | GOP | Month | 1+2+3+4+5+6 | No.1 | No.2 | No.3 | No.4 | No.5 | No.6 | (liters) | KN - 1 | KN - 2 | KN - 3 | KN - 4 | KN - 5 | KN - 6 | (KUNA) | (EUR) | (EUR) |
| 0 | 105.839 | -443.360 | Jan-17 | 78 | 0 | 2 | 15 | 17 | 44 | 0 | #DIV/0! | 26,22 | 48,54 | 193,64 | 215,96 | 517,30 | 26,22 | 1.027,88 | 137,05 | #DIV/0! |
| 0 | 49.448 | -477.937 | Feb-17 | 90 | 0 | 1 | 17 | 3 | 69 | 0 | #DIV/0! | 26,22 | 37,38 | 215,96 | 59,70 | 796,33 | 26,22 | 1.161,81 | 154,91 | #DIV/0! |
| 0 | 275.709 | -602.845 | Mar-17 | 283 | 0 | 136 | 21 | 23 | 103 | 0 | #DIV/0! | 26,22 | 1.544,12 | 260,60 | 282,92 | 1.175,80 | 26,22 | 3.315,88 | 442,12 | #DIV/0! |
| 0 | 282.309 | -648.247 | Apr-17 | 786 | 0 | 560 | 72 | 30 | 124 | 0 | #DIV/0! | 26,22 | 6.276,38 | 829,81 | 361,05 | 1.410,18 | 26,22 | 8.929,86 | 1.190,65 | #DIV/0! |
| 12.067 | 6.653.772 | 2.303.772 | May-17 | 5782 | 2 | 2363 | 139 | 3007 | 271 | 0 | 479 | 48,54 | 26.399,66 | 1.577,60 | 33.587,35 | 3.050,85 | 26,22 | 64.690,22 | 8.625,36 | 0,71 |
| 14.977 | 8.643.289 | 4.486.728 | Jun-17 | 5605 | 57 | 1950 | 248 | 3143 | 207 | 0 | 374 | 662,00 | 21.790,00 | 2.794,00 | 35.105,00 | 2.336,00 | 26,22 | 62.713,22 | 8.361,76 | 0,56 |
| 15.926 | 9.447.645 | 4.660.201 | Jul-17 | 6352 | 230 | 1788 | 312 | 3860 | 162 | 0 | 399 | 2.593,00 | 19.982,00 | 3.508,00 | 43.107,00 | 1.834,00 | 26,22 | 71.050,22 | 9.473,36 | 0,59 |
| 16.190 | 9.468.051 | 4.786.517 | Aug-17 | 6429 | 312 | 1254 | 172 | 4519 | 172 | 0 | 397 | 3.508,00 | 14.022,00 | 1.945,00 | 50.462,00 | 1.945,00 | 26,22 | 71.908,22 | 9.587,76 | 0,59 |
| 15.223 | 8.842.886 | 4.441.734 | Sep-17 | 4573 | 38 | 905 | 77 | 3393 | 160 | 0 | 300 | 450,00 | 10.126,00 | 885,00 | 37.895,00 | 1.811,00 | 26,22 | 51.193,22 | 6.825,76 | 0,45 |
| 4.174 | 2.218.594 | 305.763 | Oct-17 | 2514 | 7 | 426 | 38 | 1876 | 167 | 0 | 602 | 104,00 | 4.780,00 | 450,00 | 20.964,00 | 1.890,00 | 26,22 | 28.214,22 | 3.761,90 | 0,90 |
| 0 | 60.309 | -715.818 | Nov-17 | 133 | 0 | 80 | 10 | 18 | 25 | 0 | #DIV/0! | 26,22 | 919,00 | 137,00 | 227,00 | 305,00 | 26,22 | 1.640,44 | 218,73 | #DIV/0! |
| 0 | 172.319 | -957.590 | Dec-17 | 49 | 0 | 22 | 5 | 1 | 21 | 0 | #DIV/0! | 26,22 | 271,00 | 82,00 | 37,00 | 260,00 | 26,22 | 702,44 | 93,66 | #DIV/0! |
| 78.557 | 46.220.169 kn | 17.138.919 kn | TOTAL | 32674 | | | | | | | 416 | | | | | | | 366.548 kn | 48.873,02 EUR | 0,62 |

| 2018 | | | | CONSUMPTION | | | | | | | | COST | | | | | | | | |
|--------|---------------|---------------|--------|-------------|-----------------|------|------|------|------|------|----------|-----------------|-----------|--------|-----------|----------|--------|------------|---------------|---------|
| | | | | Total | Per water meter | | | | | | Per pax | Per water meter | | | | | | Total | Total | Per pax |
| PAX | Total income | GOP | Month | 1+2+3+4+5+6 | No.1 | No.2 | No.3 | No.4 | No.5 | No.6 | (liters) | KN - 1 | KN - 2 | KN - 3 | KN - 4 | KN - 5 | KN - 6 | (KUNA) | (EUR) | (EUR) |
| 0 | 12.465 | -496.200 | Jan-18 | 13 | 9 | 0 | 0 | 4 | 0 | 0 | #DIV/0! | 118,15 | 23,20 | 23,20 | 65,40 | 23,20 | 23,20 | 276,35 | 36,85 | #DIV/0! |
| 0 | 25.890 | -682.260 | Feb-18 | 110 | 106 | 1 | 0 | 3 | 0 | 0 | #DIV/0! | 1.141,50 | 33,75 | 23,20 | 54,85 | 23,20 | 23,20 | 1.299,70 | 173,29 | #DIV/0! |
| 0 | 22.613 | -585.548 | Mar-18 | 79 | 78 | 0 | 0 | 1 | 0 | 0 | #DIV/0! | 846,10 | 23,20 | 23,20 | 33,75 | 23,20 | 23,20 | 972,65 | 129,69 | #DIV/0! |
| 0 | 22.013 | -1.051.238 | Apr-18 | 553 | 201 | 31 | 0 | 305 | 16 | 0 | #DIV/0! | 2.143,75 | 350,25 | 23,20 | 3.240,95 | 192,00 | 23,20 | 5.973,35 | 796,45 | #DIV/0! |
| 12.869 | 6.924.840 | 2.817.825 | May-18 | 6366 | 260 | 2219 | 0 | 3685 | 202 | 0 | 495 | 2.766,30 | 23.433,65 | 23,20 | 38.899,95 | 2.154,30 | 23,20 | 67.300,60 | 8.973,41 | 0,70 |
| 14.909 | 8.703.615 | 4.656.308 | Jun-18 | 6663 | 214 | 3609 | 0 | 2664 | 176 | 0 | 447 | 2.280,90 | 38.098,15 | 23,20 | 28.128,40 | 1.880,00 | 23,20 | 70.433,85 | 9.391,18 | 0,63 |
| 16.007 | 9.517.125 | 4.929.540 | Jul-18 | 5148 | 188 | 2932 | 0 | 1901 | 127 | 0 | 322 | 2.006,60 | 30.955,80 | 23,20 | 20.078,75 | 1.363,05 | 23,20 | 54.450,60 | 7.260,08 | 0,45 |
| 15.856 | 9.526.290 | 4.879.343 | Aug-18 | 7141 | 206 | 4052 | 0 | 2730 | 153 | 0 | 450 | 2.196,50 | 42.771,80 | 23,20 | 28.824,70 | 1.637,35 | 23,20 | 75.476,75 | 10.063,57 | 0,63 |
| 14.785 | 8.595.600 | 4.144.973 | Sep-18 | 5907 | 156 | 3586 | 0 | 2047 | 118 | 0 | 400 | 1.669,00 | 37.855,50 | 23,20 | 21.619,05 | 1.268,10 | 23,20 | 62.458,05 | 8.327,74 | 0,56 |
| 8.816 | 3.036.281 | 390.368 | Oct-18 | 2672 | 272 | 1730 | 0 | 612 | 58 | 0 | 303 | 2.892,80 | 18.274,70 | 23,20 | 6.479,80 | 635,10 | 23,20 | 28.328,80 | 3.777,17 | 0,43 |
| 13.266 | 2.319.782 | -579.235 | Nov-18 | 2035 | 308 | 1719 | 0 | 1 | 7 | 0 | 153 | 3.272,60 | 18.158,65 | 23,20 | 33,75 | 97,05 | 23,20 | 21.608,45 | 2.881,13 | 0,22 |
| 5.330 | 959.573 | -1.646.996 | Dec-18 | 918 | 190 | 700 | 0 | 18 | 10 | 0 | 172 | 2.027,70 | 7.408,20 | 23,20 | 213,10 | 128,70 | 23,20 | 9.824,10 | 1.309,88 | 0,25 |
| 101838 | 49.666.086 kn | 16.776.880 kn | TOTAL | 37605 | | | | | | | 369 | | | | | | | 398.403 kn | 53.120,43 EUR | 0,52 |

| 2019 | | | | CONSUMPTION | | | | | | | | COST | | | | | | | |
|--------|--------|-------------|------|-------------|-----------------|-------|------|------|----------|----------|-----------|-----------------|-----------|----------|----------|------------|---------------|---------|-------|
| | | | | Total | Per water meter | | | | | | Per pax | Per water meter | | | | | | Total | Total |
| PAX | Month | 1+2+3+4+5+6 | No.1 | No.2 | No.3 | No.4 | No.5 | No.6 | (liters) | KN - 1 | KN - 2 | KN - 3 | KN - 4 | KN - 5 | KN - 6 | (KUNA) | (EUR) | (EUR) | |
| 6.830 | Jan-19 | 602 | 128 | 445 | 0 | 25 | 4 | 0 | 88 | 1.373,60 | 4.717,95 | 23,20 | 286,95 | 65,40 | 23,20 | 6.490,30 | 865,37 | 0,13 | |
| 11.766 | Feb-19 | 1482 | 273 | 1203 | 0 | 3 | 3 | 0 | 126 | 2.903,35 | 12.714,85 | 23,20 | 54,85 | 54,85 | 23,20 | 15.774,30 | 2.103,24 | 0,18 | |
| 12.904 | Mar-19 | 1477 | 285 | 1177 | 0 | 12 | 3 | 0 | 114 | 3.029,95 | 12.440,55 | 23,20 | 149,80 | 54,85 | 23,20 | 15.721,55 | 2.096,21 | 0,16 | |
| 11.969 | Apr-19 | 1935 | 355 | 1556 | 0 | 6 | 18 | 0 | 162 | 3.768,45 | 16.439,00 | 23,20 | 86,50 | 213,10 | 23,20 | 20.553,45 | 2.740,46 | 0,23 | |
| 10.500 | May-19 | 5026 | 270 | 2095 | 0 | 2540 | 120 | 1 | 479 | 2.871,70 | 22.125,45 | 23,20 | 26.820,20 | 1.289,20 | 33,75 | 53.163,50 | 7.088,47 | 0,68 | |
| 15.431 | Jun-19 | 5826 | 205 | 3408 | 0 | 2048 | 140 | 25 | 378 | 2.185,95 | 35.977,60 | 23,20 | 21.629,60 | 1.500,20 | 286,95 | 61.603,50 | 8.213,80 | 0,53 | |
| 16.041 | Jul-19 | 6941 | 183 | 3682 | 0 | 2612 | 185 | 279 | 433 | 1.953,85 | 38.868,30 | 23,20 | 27.579,80 | 1.974,95 | 2.966,65 | 73.366,75 | 9.782,23 | 0,61 | |
| 16.213 | Aug-19 | 7312 | 207 | 3895 | 0 | 2827 | 204 | 179 | 451 | 2.207,05 | 41.115,45 | 23,20 | 29.848,05 | 2.175,40 | 1.911,65 | 77.280,80 | 10.304,11 | 0,64 | |
| 15.430 | Sep-19 | 5672 | 185 | 3323 | 0 | 1832 | 142 | 190 | 368 | 1.974,95 | 35.080,85 | 23,20 | 19.350,80 | 1.521,30 | 2.027,70 | 59.978,80 | 7.997,17 | 0,52 | |
| 4.783 | Oct-19 | 2940 | 205 | 1809 | 0 | 834 | 81 | 11 | 615 | 2.185,95 | 19.108,15 | 23,20 | 8.821,90 | 877,75 | 139,25 | 31.156,20 | 4.154,16 | 0,87 | |
| 0 | Nov-19 | 146 | 128 | 3 | 0 | 7 | 8 | 0 | #DIV/0! | 1.373,60 | 54,85 | 23,20 | 97,05 | 107,60 | 23,20 | 1.679,50 | 223,93 | #DIV/0! | |
| 0 | Dec-19 | 142 | 104 | 0 | 0 | 25 | 13 | 0 | #DIV/0! | 1.120,40 | 23,20 | 23,20 | 286,95 | 160,35 | 23,20 | 1.637,30 | 218,31 | #DIV/0! | |
| 121867 | TOTAL | 39501 | 2528 | 22596 | 0 | 12771 | 921 | 685 | 324 | | | | | | | 418.406 kn | 55.787,46 EUR | 0,46 | |

| 2020 | | CONSUMPTION | | | | | | | | COST | | | | | | | | |
|--------|--------|-------------|-----------------|------|------|------|------|------|----------|-----------------|-----------|--------|-----------|----------|----------|------------|---------------|---------|
| | | Total | Per water meter | | | | | | Per pax | Per water meter | | | | | | Total | Total | Per pax |
| PAX | Month | +2+3+4+5+6 | No.1 | No.2 | No.3 | No.4 | No.5 | No.6 | (liters) | KN - 1 | KN - 2 | KN - 3 | KN - 4 | KN - 5 | KN - 6 | (KUNA) | (EUR) | (EUR) |
| 0 | Jan-20 | 110 | 91 | 1 | 0 | 1 | 17 | 0 | #DIV/0! | 983,25 | 33,75 | 23,20 | 33,75 | 202,55 | 23,20 | 1.299,70 | 173,29 | #DIV/0! |
| 0 | Feb-20 | 147 | 135 | 1 | 0 | 0 | 11 | 0 | #DIV/0! | 1.447,45 | 33,75 | 23,20 | 23,20 | 139,25 | 23,20 | 1.690,05 | 225,34 | #DIV/0! |
| 0 | Mar-20 | 75 | 65 | 5 | 0 | 2 | 3 | 0 | #DIV/0! | 708,95 | 75,95 | 23,20 | 44,30 | 54,85 | 23,20 | 930,45 | 124,06 | #DIV/0! |
| 0 | Apr-20 | 133 | 128 | 0 | 0 | 5 | 0 | 0 | #DIV/0! | 1.373,60 | 23,20 | 23,20 | 75,95 | 23,20 | 23,20 | 1.542,35 | 205,65 | #DIV/0! |
| 0 | May-20 | 192 | 76 | 0 | 0 | 111 | 5 | 0 | #DIV/0! | 825,00 | 23,20 | 23,20 | 1.194,25 | 75,95 | 23,20 | 2.164,80 | 288,64 | #DIV/0! |
| 1.831 | Jun-20 | 2987 | 211 | 592 | 0 | 2083 | 74 | 27 | 1631 | 2.249,25 | 6.268,80 | 23,20 | 21.998,85 | 803,90 | 308,05 | 31.652,05 | 4.220,27 | 2,30 |
| 9.818 | Jul-20 | 3611 | 221 | 1586 | 0 | 1574 | 100 | 130 | 368 | 2.354,75 | 16.755,50 | 23,20 | 16.628,90 | 1.078,20 | 1.394,70 | 38.235,25 | 5.098,03 | 0,52 |
| 10.703 | Aug-20 | 5492 | 256 | 2616 | 0 | 2259 | 143 | 218 | 513 | 2.724,00 | 27.622,00 | 23,20 | 23.855,65 | 1.531,85 | 2.323,10 | 58.079,80 | 7.743,97 | 0,72 |
| 2.238 | Sep-20 | 1880 | 333 | 689 | 0 | 763 | 56 | 39 | 840 | 3.536,35 | 7.292,15 | 23,20 | 8.072,85 | 614,00 | 434,65 | 19.973,20 | 2.663,09 | 1,19 |
| 0 | Oct-20 | 366 | 291 | 48 | 0 | 7 | 4 | 16 | #DIV/0! | 3.093,25 | 529,60 | 23,20 | 97,05 | 65,40 | 192,00 | 4.000,50 | 533,40 | #DIV/0! |
| 0 | Nov-20 | 208 | 199 | 2 | 0 | 0 | 7 | 0 | #DIV/0! | 2.122,65 | 44,30 | 23,20 | 23,20 | 97,05 | 23,20 | 2.333,60 | 311,15 | #DIV/0! |
| 0 | Dec-20 | 84 | 77 | 0 | 0 | 1 | 6 | 0 | #DIV/0! | 835,55 | 23,20 | 23,20 | 33,75 | 86,50 | 23,20 | 1.025,40 | 136,72 | #DIV/0! |
| 24590 | TOTAL | 15285 | 2083 | 5540 | 0 | 6806 | 426 | 430 | 622 | | | | | | | 162.927 kn | 21.723,62 EUR | 0,88 |

| 2021 | | CONSUMPTION | | | | | | | | COST | | |
|--------|--------|-------------|-----------------|-------|------|------|------|------|----------|------------|---------------|---------|
| | | Total | Per water meter | | | | | | Per pax | Total | Total | Per pax |
| PAX | Month | +2+3+4+5+6 | No.1 | No.2 | No.3 | No.4 | No.5 | No.6 | (liters) | (KUNA) | (EUR) | (EUR) |
| 0 | Jan-21 | 103 | 95 | 0 | 0 | 1 | 7 | 0 | #DIV/0! | 1.225,85 | 163,45 | #DIV/0! |
| 0 | Feb-21 | 157 | 39 | 0 | 0 | 78 | 40 | 0 | #DIV/0! | 1.795,55 | 239,41 | #DIV/0! |
| 0 | Mar-21 | 148 | 46 | 0 | 0 | 46 | 56 | 0 | #DIV/0! | 1.700,60 | 226,75 | #DIV/0! |
| 0 | Apr-21 | 300 | 128 | 27 | 0 | 60 | 85 | 0 | #DIV/0! | 3.304,20 | 440,56 | #DIV/0! |
| 539 | May-21 | 1634 | 400 | 136 | 0 | 1031 | 67 | 0 | 3032 | 17.377,90 | 2.317,05 | 4,30 |
| 2.339 | Jun-21 | 3059 | 372 | 884 | 0 | 1589 | 134 | 80 | 1308 | 32.411,65 | 4.321,55 | 1,85 |
| 11.050 | Jul-21 | 4573 | 214 | 2491 | 0 | 1534 | 149 | 185 | 414 | 48.384,35 | 6.451,25 | 0,58 |
| 15.347 | Aug-21 | 6118 | 248 | 3402 | 0 | 2865 | 200 | 298 | 399 | 64.684,10 | 8.624,55 | 0,56 |
| 15.285 | Sep-21 | 5687 | 190 | 3283 | 0 | 1998 | 156 | 60 | 372 | 60.137,05 | 8.018,27 | 0,52 |
| 3.143 | Oct-21 | 2192 | 216 | 1181 | 0 | 715 | 72 | 8 | 697 | 23.264,80 | 3.101,97 | 0,99 |
| 0 | Nov-21 | 101 | 85 | 3 | 0 | 9 | 3 | 1 | #DIV/0! | 1.204,75 | 160,63 | #DIV/0! |
| 0 | Dec-21 | 82 | 46 | 2 | 0 | 3 | 31 | 0 | #DIV/0! | 1.004,30 | 133,91 | #DIV/0! |
| 47703 | TOTAL | 24154 | 2079 | 11409 | 0 | 9929 | 1000 | 632 | 506 | 256.495 kn | 34.199,35 EUR | 0,72 |

| 2022 | | CONSUMPTION | | | | | | | | COST | | |
|--------|--------|-------------|-----------------|-------|------|------|------|------|----------|------------|---------------|---------|
| | | Total | Per water meter | | | | | | Per pax | Total | Total | Per pax |
| PAX | Month | +2+3+4+5+6 | No.1 | No.2 | No.3 | No.4 | No.5 | No.6 | (liters) | (KUNA) | (EUR) | (EUR) |
| 0 | Jan-22 | 82 | 27 | 1 | 0 | 2 | 52 | 0 | #DIV/0! | 1.143,50 | 152,47 | #DIV/0! |
| 0 | Feb-22 | 148 | 62 | 0 | 0 | 2 | 84 | 0 | #DIV/0! | 1.919,00 | 255,87 | #DIV/0! |
| 0 | Mar-22 | 198 | 91 | 7 | 0 | 2 | 98 | 0 | #DIV/0! | 2.506,50 | 334,20 | #DIV/0! |
| 0 | Apr-22 | 1729 | 231 | 73 | 0 | 1319 | 106 | 0 | #DIV/0! | 20.495,75 | 2.732,77 | #DIV/0! |
| 10.857 | May-22 | 948 | 6 | 4 | 0 | 776 | 158 | 4 | 87 | 11.319,00 | 1.509,20 | 0,14 |
| 14.949 | Jun-22 | 7677 | 420 | 6019 | 0 | 1040 | 186 | 12 | 514 | 90.384,75 | 12.051,30 | 0,81 |
| 16.059 | Jul-22 | 5891 | 202 | 3707 | 0 | 1476 | 226 | 280 | 367 | 69.399,25 | 9.253,23 | 0,58 |
| 16.399 | Aug-22 | 5798 | 198 | 3907 | 0 | 1198 | 231 | 264 | 354 | 68.306,50 | 9.107,53 | 0,56 |
| 0 | Sep-22 | 0 | | | | | | | #DIV/0! | 180,00 | 24,00 | #DIV/0! |
| 0 | Oct-22 | 0 | | | | | | | #DIV/0! | 180,00 | 24,00 | #DIV/0! |
| 0 | Nov-22 | 0 | | | | | | | #DIV/0! | 180,00 | 24,00 | #DIV/0! |
| 0 | Dec-22 | 0 | | | | | | | #DIV/0! | 180,00 | 24,00 | #DIV/0! |
| 58264 | TOTAL | 22471 | 1237 | 13718 | 0 | 5815 | 1141 | 560 | 386 | 266.194 kn | 35.492,57 EUR | 0,61 |

HOTEL: TUI Blue Adriatic Beach Resort

Report last updated on: 15/02/2022

| | Occupancy | | | Totals | | | | | | Water Consumption per Guest | | | | | |
|-----------|-----------|-------|-------|--------|-----------|-------|----------|-------|----------|-----------------------------|-------------|-------------|-------------|-------------|-------------|
| | 2019 | 2020 | 2021 | 2019 | | 2020 | | 2021 | | 2019 | | 2020 | | 2021 | |
| | | | | m3 | € | m3 | € | m3 | € | m3 | € | m3 | € | m3 | € |
| January | 6830 | 0 | 0 | 602 | 865,37 | 110 | 173,29 | 103 | 163,45 | 0,09 | 0,13 | #DIV/0! | #DIV/0! | #DIV/0! | #DIV/0! |
| February | 11766 | 0 | 0 | 1482 | 2.103,24 | 147 | 225,34 | 157 | 239,41 | 0,13 | 0,18 | #DIV/0! | #DIV/0! | #DIV/0! | #DIV/0! |
| March | 12904 | 0 | 0 | 1477 | 2.096,21 | 75 | 124,06 | 148 | 226,75 | 0,11 | 0,16 | #DIV/0! | #DIV/0! | #DIV/0! | #DIV/0! |
| April | 11969 | 0 | 0 | 1935 | 2.740,46 | 133 | 205,65 | 300 | 440,56 | 0,16 | 0,23 | #DIV/0! | #DIV/0! | #DIV/0! | #DIV/0! |
| May | 10500 | 0 | 539 | 5026 | 7.088,47 | 192 | 288,64 | 1634 | 2.317,05 | 0,48 | 0,68 | #DIV/0! | #DIV/0! | 3,03 | 4,30 |
| June | 15431 | 1831 | 2339 | 5826 | 8.213,80 | 2987 | 4.220,27 | 3059 | 4.321,55 | 0,38 | 0,53 | 1,63 | 2,30 | 1,31 | 1,85 |
| July | 16041 | 9818 | 13509 | 6941 | 9.782,23 | 3611 | 5.098,03 | 4573 | 6.451,25 | 0,43 | 0,61 | 0,37 | 0,52 | 0,34 | 0,48 |
| August | 16213 | 10703 | 15347 | 7312 | 10.304,11 | 5492 | 7.743,97 | 6118 | 8.624,55 | 0,45 | 0,64 | 0,51 | 0,72 | 0,40 | 0,56 |
| September | 15430 | 2328 | 15285 | 5672 | 7.997,17 | 1880 | 2.663,09 | 5687 | 8.018,27 | 0,37 | 0,52 | 0,81 | 1,14 | 0,37 | 0,52 |
| October | 4783 | 0 | 3143 | 2940 | 4.154,16 | 366 | 533,40 | 2192 | 3.101,97 | 0,61 | 0,87 | #DIV/0! | #DIV/0! | 0,70 | 0,99 |
| November | 0 | 0 | 0 | 146 | 223,93 | 208 | 311,15 | 101 | 160,63 | #DIV/0! | #DIV/0! | #DIV/0! | #DIV/0! | #DIV/0! | #DIV/0! |
| December | 0 | 0 | 0 | 142 | 218,31 | 84 | 136,72 | 82 | 133,91 | #DIV/0! | #DIV/0! | #DIV/0! | #DIV/0! | #DIV/0! | #DIV/0! |
| Total | 121867 | 24680 | 50162 | 39501 | | 15285 | | 24154 | | 324 | | 619 | | 482 | |

WATER CUNSUMPTIONS IN TT HOTELS - TBM

| 2016 | | CONSUMPTION | | | | | | COST | | | | | | |
|--------|--------------|--------------|-----------------|-----------|--------------|-------------|------------|-----------------|--------|-----------|----------|-------------------|----------------------|-----------------|
| | | Total | Per water meter | | | | Per pax | Per water meter | | | | Total | Total | Per pax |
| PAX | Month | 1+2+3+4 | No.1 | No.2 | No.3 | No.4 | (liters) | No.1 | No.2 | No.3 | No.4 | (KUNA) | (EUR) | (EUR) |
| 0 | Jan-16 | 200 | 0 | 0 | 3 | 197 | #DIV/0! | 26,22 | 26,22 | 67,35 | 2.727,49 | 2.847,28 | 379,64 | #DIV/0! |
| 0 | Feb-16 | 24 | 0 | 0 | 0 | 24 | #DIV/0! | 26,22 | 26,22 | 26,22 | 355,30 | 433,96 | 57,86 | #DIV/0! |
| 0 | Mar-16 | 22 | 0 | 0 | 0 | 22 | #DIV/0! | 26,22 | 26,22 | 26,22 | 327,88 | 406,54 | 54,21 | #DIV/0! |
| 0 | Apr-16 | 205 | 0 | 5 | 55 | 145 | #DIV/0! | 26,22 | 94,79 | 780,39 | 2.014,47 | 2.915,87 | 388,78 | #DIV/0! |
| 6.262 | May-16 | 2042 | 440 | 20 | 1351 | 231 | 326 | 6.059,00 | 300,00 | 18.551,13 | 3.193,69 | 28.103,82 | 3.747,18 | 0,60 |
| 9.869 | Jun-16 | 2233 | 0 | 0 | 2104 | 129 | 226 | 26,22 | 26,22 | 28.876,26 | 1.795,07 | 30.723,77 | 4.096,50 | 0,42 |
| 10.628 | Jul-16 | 3245 | 0 | 4 | 3096 | 145 | 305 | 26,22 | 81,06 | 42.478,58 | 2.014,47 | 44.600,33 | 5.946,71 | 0,56 |
| 10.693 | Aug-16 | 3932 | 10 | 19 | 3773 | 130 | 368 | 163,34 | 286,75 | 51.761,59 | 1.808,78 | 54.020,46 | 7.202,73 | 0,67 |
| 10.058 | Sep-16 | 3342 | 120 | 12 | 3077 | 133 | 332 | 1.671,00 | 190,00 | 42.218,00 | 1.849,00 | 45.928,00 | 6.123,73 | 0,61 |
| 1.307 | Oct-16 | 1415 | 0 | 0 | 1218 | 197 | 1083 | 26,22 | 26,22 | 16.727,00 | 2.727,00 | 19.506,44 | 2.600,86 | 1,99 |
| 0 | Nov-16 | 156 | 0 | 0 | 0 | 156 | #DIV/0! | 26,22 | 26,22 | 26,22 | 2.165,00 | 2.243,66 | 299,15 | #DIV/0! |
| 0 | Dec-16 | 145 | 1 | 0 | 115 | 29 | #DIV/0! | 39,93 | 26,22 | 1.603,00 | -291,00 | 1.378,15 | 183,75 | #DIV/0! |
| 48.817 | TOTAL | 16961 | 571 | 60 | 14792 | 1538 | 347 | | | | | 233.108 kn | 31.081,10 EUR | 0,64 EUR |

| 2017 | | CONSUMPTION | | | | | | COST | | | | | | |
|--------|--------------|--------------|-----------------|------------|--------------|-------------|------------|-----------------|----------|-----------|----------|-------------------|----------------------|-----------------|
| | | Total | Per water meter | | | | Per pax | Per water meter | | | | Total | Total | Per pax |
| PAX | Month | 1+2+3+4 | No.1 | No.2 | No.3 | No.4 | (liters) | No.1 | No.2 | No.3 | No.4 | (KUNA) | (EUR) | (EUR) |
| 0 | Jan-17 | 44 | 0 | 0 | 0 | 44 | #DIV/0! | 26,22 | 26,22 | 26,22 | 629,54 | 708,20 | 94,43 | #DIV/0! |
| 0 | Feb-17 | 49 | 0 | 2 | 0 | 47 | #DIV/0! | 26,22 | 53,64 | 26,22 | 670,69 | 776,77 | 103,57 | #DIV/0! |
| 0 | Mar-17 | 65 | 10 | 0 | 1 | 54 | #DIV/0! | 163,34 | 26,22 | 39,93 | 766,66 | 996,15 | 132,82 | #DIV/0! |
| 0 | Apr-17 | 41 | 4 | 37 | 0 | 0 | #DIV/0! | 70,86 | 365,18 | 26,22 | 26,22 | 488,48 | 65,13 | #DIV/0! |
| 6.186 | May-17 | 2417 | 250 | 116 | 1698 | 353 | 391 | 3.454,00 | 1.616,00 | 23.309,00 | 4.866,00 | 33.245,00 | 4.432,67 | 0,72 |
| 10.044 | Jun-17 | 3113 | 10 | 0 | 2983 | 120 | 310 | 163,00 | 26,22 | 40.929,00 | 1.671,00 | 42.789,22 | 5.705,23 | 0,57 |
| 10.550 | Jul-17 | 3093 | 0 | 0 | 2972 | 121 | 293 | 26,22 | 26,22 | 40.778,00 | 1.685,00 | 42.515,44 | 5.668,73 | 0,54 |
| 10.703 | Aug-17 | 4240 | 60 | 0 | 4035 | 145 | 396 | 848,00 | 26,22 | 55.354,00 | 2.014,00 | 58.242,22 | 7.765,63 | 0,73 |
| 9.943 | Sep-17 | 3407 | 0 | 0 | 3260 | 147 | 343 | 26,22 | 26,22 | 44.727,00 | 2.041,00 | 46.820,44 | 6.242,73 | 0,63 |
| 1.352 | Oct-17 | 1085 | 0 | 0 | 929 | 156 | 803 | 26,22 | 26,22 | 12.764,00 | 2.165,00 | 14.981,44 | 1.997,53 | 1,48 |
| 0 | Nov-17 | 0 | 0 | 0 | 0 | 0 | #DIV/0! | 26,22 | 26,22 | 26,22 | 26,22 | 104,88 | 13,98 | #DIV/0! |
| 0 | Dec-17 | 264 | 0 | 0 | 112 | 152 | #DIV/0! | 26,22 | 26,22 | 1.561,00 | 2.110,00 | 3.723,44 | 496,46 | #DIV/0! |
| 48.778 | TOTAL | 17818 | 334 | 155 | 15990 | 1339 | 365 | | | | | 245.392 kn | 32.718,89 EUR | 0,67 EUR |

| 2018 | | CONSUMPTION | | | | | | COST | | | | | | |
|--------|--------|-------------|-----------------|-------|------|------|----------|------------------------|-----------|--------|----------|------------|---------------|----------|
| | | Total | Per water meter | | | | Per pax | Per water meter (kuna) | | | | Total | Total | Per pax |
| PAX | Month | 1+2+3+4 | No.1 | No.2 | No.3 | No.4 | (liters) | No.1 | No.2 | No.3 | No.4 | (KUNA) | (EUR) | (EUR) |
| 0 | Jan-18 | 27 | 25 | 2 | 0 | 0 | #DIV/0! | 341,95 | 48,70 | 23,20 | 23,20 | 437,05 | 58,27 | #DIV/0! |
| 0 | Feb-18 | 90 | 29 | 61 | 0 | 0 | #DIV/0! | 392,95 | 800,95 | 23,20 | 23,20 | 1.240,30 | 165,37 | #DIV/0! |
| 0 | Mar-18 | 82 | 27 | 55 | 0 | 0 | #DIV/0! | 367,45 | 724,45 | 23,20 | 23,20 | 1.138,30 | 151,77 | #DIV/0! |
| 0 | Apr-18 | 442 | 231 | 51 | 0 | 160 | #DIV/0! | 2.968,45 | 673,45 | 23,20 | 2.063,20 | 5.728,30 | 763,77 | #DIV/0! |
| 5.276 | May-18 | 2152 | 234 | 1853 | 55 | 10 | 408 | 3.006,70 | 23.648,95 | 724,45 | 150,70 | 27.530,80 | 3.670,77 | 0,70 |
| 9.852 | Jun-18 | 2785 | 106 | 2679 | 0 | 0 | 283 | 1.374,70 | 34.180,45 | 23,20 | 23,20 | 35.601,55 | 4.746,87 | 0,48 |
| 10.600 | Jul-18 | 3081 | 146 | 2875 | 0 | 60 | 291 | 1.884,70 | 36.679,45 | 23,20 | 788,20 | 39.375,55 | 5.250,07 | 0,50 |
| 10.635 | Aug-18 | 3974 | 154 | 3680 | 0 | 140 | 374 | 1.986,70 | 46.943,20 | 23,20 | 1.808,20 | 50.761,30 | 6.768,17 | 0,64 |
| 9.519 | Sep-18 | 2960 | 147 | 2803 | 0 | 10 | 311 | 1.897,45 | 35.761,45 | 23,20 | 150,70 | 37.832,80 | 5.044,37 | 0,53 |
| 1.639 | Oct-18 | 1487 | 265 | 1222 | 0 | 0 | 907 | 3.401,95 | 15.603,70 | 23,20 | 23,20 | 19.052,05 | 2.540,27 | 1,55 |
| 0 | Nov-18 | 270 | 206 | 64 | 0 | 0 | #DIV/0! | 2.649,70 | 839,20 | 23,20 | 23,20 | 3.535,30 | 471,37 | #DIV/0! |
| 0 | Dec-18 | 78 | 17 | 61 | 0 | 0 | #DIV/0! | 239,95 | 800,95 | 23,20 | 23,20 | 1.087,30 | 144,97 | #DIV/0! |
| 47.521 | TOTAL | 17428 | 1587 | 15406 | 55 | 380 | 367 | | | | | 223.321 kn | 29.776,08 EUR | 0,63 EUR |

| 2019 | | CONSUMPTION | | | | | | COST | | | | | | |
|--------|--------|-------------|-----------------|-------|------|------|----------|------------------------|-----------|-------|----------|------------|---------------|----------|
| | | Total | Per water meter | | | | Per pax | Per water meter (kuna) | | | | Total | Total | Per pax |
| PAX | Month | 1+2+3+4 | No.1 | No.2 | No.3 | No.4 | (liters) | No.1 | No.2 | No.3 | No.4 | (KUNA) | (EUR) | (EUR) |
| 0 | Jan-19 | 72 | 17 | 55 | 0 | 0 | #DIV/0! | 239,95 | 724,45 | 23,20 | 23,20 | 1.010,80 | 134,77 | #DIV/0! |
| 0 | Feb-19 | 71 | 21 | 50 | 0 | 0 | #DIV/0! | 290,95 | 660,70 | 23,20 | 23,20 | 998,05 | 133,07 | #DIV/0! |
| 0 | Mar-19 | 62 | 17 | 45 | 0 | 0 | #DIV/0! | 239,95 | 596,95 | 23,20 | 23,20 | 883,30 | 117,77 | #DIV/0! |
| 252 | Apr-19 | 947 | 97 | 630 | 0 | 220 | 3758 | 1.259,95 | 8.055,70 | 23,20 | 2.828,20 | 12.167,05 | 1.622,27 | 6,44 |
| 5.302 | May-19 | 1234 | 253 | 981 | 0 | 0 | 233 | 3.248,95 | 12.530,95 | 23,20 | 23,20 | 15.826,30 | 2.110,17 | 0,40 |
| 9.636 | Jun-19 | 2897 | 192 | 2705 | 0 | 0 | 301 | 2.471,20 | 34.511,95 | 23,20 | 23,20 | 37.029,55 | 4.937,27 | 0,51 |
| 10.524 | Jul-19 | 3237 | 173 | 3064 | 0 | 0 | 308 | 2.228,95 | 39.089,20 | 23,20 | 23,20 | 41.364,55 | 5.515,27 | 0,52 |
| 10.782 | Aug-19 | 2639 | 153 | 2486 | 0 | 0 | 245 | 1.973,95 | 31.719,70 | 23,20 | 23,20 | 33.740,05 | 4.498,67 | 0,42 |
| 10.281 | Sep-19 | 2828 | 185 | 2583 | 0 | 60 | 275 | 2.381,95 | 32.956,45 | 23,20 | 788,20 | 36.149,80 | 4.819,97 | 0,47 |
| 1.469 | Oct-19 | 1010 | 149 | 861 | 0 | 0 | 688 | 1.922,95 | 11.000,95 | 23,20 | 23,20 | 12.970,30 | 1.729,37 | 1,18 |
| 0 | Nov-19 | 30 | 4 | 26 | 0 | 0 | #DIV/0! | 74,20 | 354,70 | 23,20 | 23,20 | 475,30 | 63,37 | #DIV/0! |
| 0 | Dec-19 | 14 | 3 | 11 | 0 | 0 | #DIV/0! | 61,45 | 163,45 | 23,20 | 23,20 | 271,30 | 36,17 | #DIV/0! |
| 48.246 | TOTAL | 15041 | 1264 | 13497 | 0 | 280 | 312 | | | | | 192.886 kn | 25.718,18 EUR | 0,53 EUR |

| 2020 | | CONSUMPTION | | | | | | COST | | | | | | |
|------|--------------|-------------|-----------------|------------|----------|-----------|----------------|------------------------|----------|-------|--------|------------------|---------------------|----------------|
| | | Total | Per water meter | | | | Per pax | Per water meter (kuna) | | | | Total | Total | Per pax |
| PAX | Month | 1+2+3+4 | No.1 | No.2 | No.3 | No.4 | (liters) | No.1 | No.2 | No.3 | No.4 | (KUNA) | (EUR) | (EUR) |
| 0 | Jan-20 | 16 | 2 | 14 | 0 | 0 | #DIV/0! | 48,70 | 201,70 | 23,20 | 23,20 | 296,80 | 39,57 | #DIV/0! |
| 0 | Feb-20 | 79 | 14 | 65 | 0 | 0 | #DIV/0! | 201,70 | 851,95 | 23,20 | 23,20 | 1.100,05 | 146,67 | #DIV/0! |
| 0 | Mar-20 | 39 | 15 | 24 | 0 | 0 | #DIV/0! | 214,45 | 329,20 | 23,20 | 23,20 | 590,05 | 78,67 | #DIV/0! |
| 0 | Apr-20 | 38 | 11 | 27 | 0 | 0 | #DIV/0! | 163,45 | 367,45 | 23,20 | 23,20 | 577,30 | 76,97 | #DIV/0! |
| 0 | May-20 | 510 | 37 | 473 | 0 | 0 | #DIV/0! | 494,95 | 6.053,95 | 23,20 | 23,20 | 6.595,30 | 879,37 | #DIV/0! |
| 0 | Jun-20 | 68 | 68 | 0 | 0 | 0 | #DIV/0! | 890,20 | 23,20 | 23,20 | 23,20 | 959,80 | 127,97 | #DIV/0! |
| 0 | Jul-20 | 113 | 113 | 0 | 0 | 0 | #DIV/0! | 1.463,95 | 23,20 | 23,20 | 23,20 | 1.533,55 | 204,47 | #DIV/0! |
| 0 | Aug-20 | 101 | 101 | 0 | 0 | 0 | #DIV/0! | 1.310,95 | 23,20 | 23,20 | 23,20 | 1.380,55 | 184,07 | #DIV/0! |
| 0 | Sep-20 | 230 | 203 | 17 | 0 | 10 | #DIV/0! | 2.611,45 | 239,95 | 23,20 | 150,70 | 3.025,30 | 403,37 | #DIV/0! |
| 0 | Oct-20 | 378 | 376 | 2 | 0 | 0 | #DIV/0! | 4.817,20 | 48,70 | 23,20 | 23,20 | 4.912,30 | 654,97 | #DIV/0! |
| 0 | Nov-20 | 218 | 64 | 154 | 0 | 0 | #DIV/0! | 839,20 | 1.986,70 | 23,20 | 23,20 | 2.872,30 | 382,97 | #DIV/0! |
| 0 | Dec-20 | 50 | 37 | 13 | 0 | 0 | #DIV/0! | 494,95 | 188,95 | 23,20 | 23,20 | 730,30 | 97,37 | #DIV/0! |
| 0 | TOTAL | 1840 | 1041 | 789 | 0 | 10 | #DIV/0! | | | | | 24.574 kn | 3.276,48 EUR | #DIV/0! |

| 2021 | | CONSUMPTION | | | | | | COST | | | | | | |
|--------|--------------|--------------|-----------------|-------------|----------|------------|------------|------------------------|-----------|-------|----------|-------------------|----------------------|-----------------|
| | | Total | Per water meter | | | | Per pax | Per water meter (kuna) | | | | Total | Total | Per pax |
| PAX | Month | 1+2+3+4 | No.1 | No.2 | No.3 | No.4 | (liters) | No.1 | No.2 | No.3 | No.4 | (KUNA) | (EUR) | (EUR) |
| 0 | Jan-21 | 121 | 58 | 63 | 0 | 0 | #DIV/0! | 762,70 | 826,45 | 23,20 | 92,80 | 1.705,15 | 227,35 | #DIV/0! |
| 0 | Feb-21 | 192 | 79 | 113 | 0 | 0 | #DIV/0! | 1.030,45 | 1.463,95 | 23,20 | 92,80 | 2.610,40 | 348,05 | #DIV/0! |
| 0 | Mar-21 | 214 | 116 | 98 | 0 | 0 | #DIV/0! | 1.502,20 | 1.272,70 | 23,20 | 92,80 | 2.890,90 | 385,45 | #DIV/0! |
| 0 | Apr-21 | 137 | 89 | 48 | 0 | 0 | #DIV/0! | 1.157,95 | 635,20 | 23,20 | 92,80 | 1.909,15 | 254,55 | #DIV/0! |
| 0 | May-21 | 225 | 53 | 172 | 0 | 0 | #DIV/0! | 698,95 | 2.216,20 | 23,20 | 92,80 | 3.031,15 | 404,15 | #DIV/0! |
| 0 | Jun-21 | 1022 | 141 | 641 | 0 | 240 | #DIV/0! | 1.820,95 | 8.195,95 | 23,20 | 3.152,80 | 13.192,90 | 1.759,05 | #DIV/0! |
| 7.934 | Jul-21 | 2162 | 213 | 1899 | 0 | 50 | 272 | 2.738,95 | 24.235,45 | 23,20 | 730,30 | 27.727,90 | 3.697,05 | 0,47 |
| 9.858 | Aug-21 | 2942 | 212 | 2720 | 0 | 10 | 298 | 2.726,20 | 34.703,20 | 23,20 | 220,30 | 37.672,90 | 5.023,05 | 0,51 |
| 8.688 | Sep-21 | 2656 | 217 | 2439 | 0 | 0 | 306 | 2.789,95 | 31.120,45 | 23,20 | 92,80 | 34.026,40 | 4.536,85 | 0,52 |
| | Oct-21 | 344 | 147 | 196 | 1 | 0 | #DIV/0! | 1.897,45 | 2.522,20 | 35,95 | 92,80 | 4.548,40 | 606,45 | #DIV/0! |
| 0 | Nov-21 | 36 | 36 | 0 | 0 | 0 | #DIV/0! | 482,20 | 23,20 | 23,20 | 92,80 | 621,40 | 82,85 | #DIV/0! |
| 0 | Dec-21 | 80 | 80 | 0 | 0 | 0 | #DIV/0! | 1.043,20 | 23,20 | 23,20 | 92,80 | 1.182,40 | 157,65 | #DIV/0! |
| 26.480 | TOTAL | 10131 | 1441 | 8389 | 1 | 300 | 383 | | | | | 131.119 kn | 17.482,54 EUR | 0,66 EUR |

| 2022 | | CONSUMPTION | | | | | | COST | | | | | | |
|--------|--------|-------------|-----------------|------|------|------|----------|------------------------|-----------|--------|----------|------------|---------------|----------|
| | | Total | Per water meter | | | | Per pax | Per water meter (kuna) | | | | Total | Total | Per pax |
| PAX | Month | 1+2+3+4 | No.1 | No.2 | No.3 | No.4 | (liters) | No.1 | No.2 | No.3 | No.4 | (KUNA) | (EUR) | (EUR) |
| 0 | Jan-22 | 236 | 94 | 142 | 0 | 0 | #DIV/0! | 1.505,80 | 2.259,40 | 30,00 | 30,00 | 3.825,20 | 510,03 | #DIV/0! |
| 0 | Feb-22 | 179 | 164 | 15 | 0 | 0 | #DIV/0! | 2.604,80 | 265,50 | 30,00 | 30,00 | 2.930,30 | 390,71 | #DIV/0! |
| 0 | Mar-22 | 229 | 86 | 143 | 0 | 0 | #DIV/0! | 1.380,20 | 2.275,10 | 30,00 | 30,00 | 3.715,30 | 495,37 | #DIV/0! |
| 0 | Apr-22 | 940 | 205 | 554 | 21 | 160 | #DIV/0! | 3.248,50 | 8.727,80 | 359,70 | 2.542,00 | 14.878,00 | 1.983,73 | #DIV/0! |
| 4.088 | May-22 | 1373 | 358 | 1013 | 2 | 0 | 336 | 5.650,60 | 15.934,10 | 61,40 | 30,00 | 21.676,10 | 2.890,15 | 0,71 |
| 8.959 | Jun-22 | 2400 | 208 | 2189 | 3 | 0 | 268 | 3.295,60 | 34.397,30 | 77,10 | 30,00 | 37.800,00 | 5.040,00 | 0,56 |
| 10.279 | Jul-22 | 3214 | 149 | 3043 | 2 | 20 | 313 | 2.369,30 | 47.805,10 | 61,40 | 344,00 | 50.579,80 | 6.743,97 | 0,66 |
| 10.694 | Aug-22 | 2820 | 172 | 2646 | 2 | 0 | 264 | 2.730,40 | 41.572,20 | 61,40 | 30,00 | 44.394,00 | 5.919,20 | 0,55 |
| | Sep-22 | 0 | | | | | #DIV/0! | 30,00 | 30,00 | 30,00 | 30,00 | 120,00 | 16,00 | #DIV/0! |
| | Oct-22 | 0 | | | | | #DIV/0! | 30,00 | 30,00 | 30,00 | 30,00 | 120,00 | 16,00 | #DIV/0! |
| 0 | Nov-22 | 0 | | | | | #DIV/0! | 30,00 | 30,00 | 30,00 | 30,00 | 120,00 | 16,00 | #DIV/0! |
| 0 | Dec-22 | 0 | | | | | #DIV/0! | 30,00 | 30,00 | 30,00 | 30,00 | 120,00 | 16,00 | #DIV/0! |
| 34.020 | TOTAL | 11391 | 1436 | 9745 | 30 | 180 | 335 | | | | | 180.279 kn | 24.037,16 EUR | 0,71 EUR |

HOTEL TUI Blue Makarska

Report last updated on: 15/02/2022

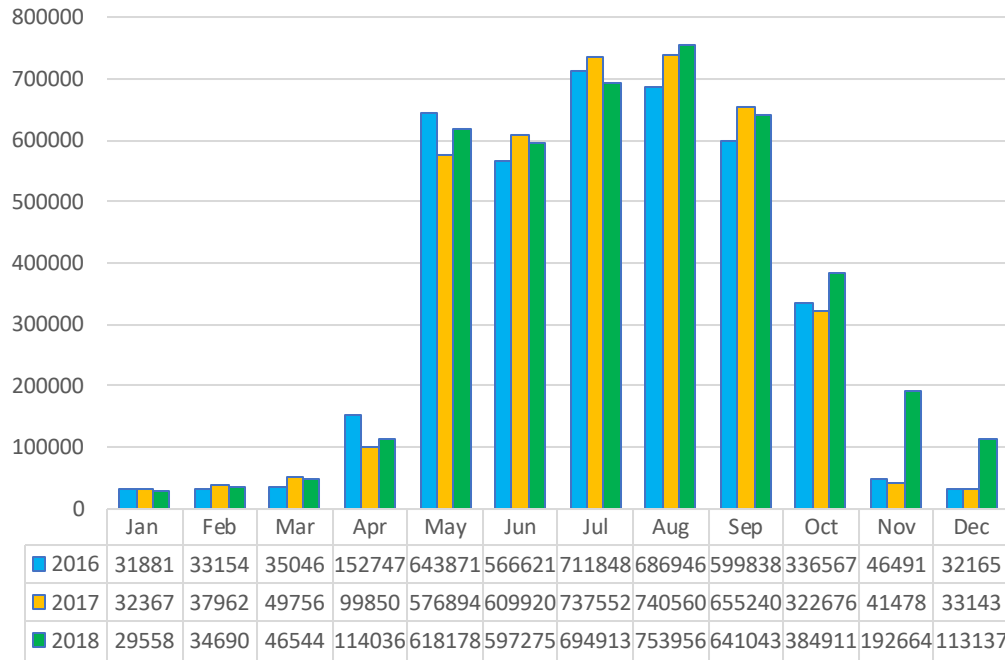
| | Occupancy | | | Totals | | | | | | Water Consumption per Guest | | | | | |
|-----------|-----------|------|-------|--------|----------|------|---------|-------|----------|-----------------------------|-------------|---------|---------|--------------|-------------|
| | 2019 | 2020 | 2021 | 2019 | | 2020 | | 2021 | | 2019 | | 2020 | | 2021 | |
| | | | | m3 | € | m3 | € | m3 | € | m3 | € | m3 | € | m3 | € |
| January | 0 | 0 | 0 | 72 | 134,77 | 16 | 39,57 | 121 | 227,35 | #DIV/0! | #DIV/0! | #DIV/0! | #DIV/0! | #DIV/0! | #DIV/0! |
| February | 0 | 0 | 0 | 71 | 133,07 | 79 | 146,67 | 192 | 348,05 | #DIV/0! | #DIV/0! | #DIV/0! | #DIV/0! | #DIV/0! | #DIV/0! |
| March | 0 | 0 | 0 | 62 | 117,77 | 39 | 78,67 | 214 | 385,45 | #DIV/0! | #DIV/0! | #DIV/0! | #DIV/0! | #DIV/0! | #DIV/0! |
| April | 252 | 0 | 0 | 947 | 1622,27 | 38 | 76,97 | 137 | 254,55 | 3,76 | 6,44 | #DIV/0! | #DIV/0! | #DIV/0! | #DIV/0! |
| May | 5302 | 0 | 0 | 1234 | 2110,17 | 510 | 879,37 | 225 | 404,15 | 0,23 | 0,40 | #DIV/0! | #DIV/0! | #DIV/0! | #DIV/0! |
| June | 9636 | 0 | 0 | 2897 | 4937,27 | 68 | 127,97 | 1022 | 1759,05 | 0,30 | 0,51 | #DIV/0! | #DIV/0! | #DIV/0! | #DIV/0! |
| July | 10524 | 0 | 7934 | 3237 | 5515,27 | 113 | 204,47 | 2162 | 3697,05 | 0,31 | 0,52 | #DIV/0! | #DIV/0! | 0,27 | 0,47 |
| August | 10782 | 0 | 9858 | 2639 | 4498,67 | 101 | 184,07 | 2942 | 5023,05 | 0,24 | 0,42 | #DIV/0! | #DIV/0! | 0,30 | 0,51 |
| September | 10281 | 0 | 8688 | 2828 | 4819,97 | 230 | 403,37 | 2656 | 4536,85 | 0,28 | 0,47 | #DIV/0! | #DIV/0! | 0,31 | 0,52 |
| October | 1469 | 0 | 0 | 1010 | 1729,37 | 378 | 654,97 | 344 | 606,45 | 0,69 | 1,18 | #DIV/0! | #DIV/0! | #DIV/0! | #DIV/0! |
| November | 0 | 0 | 0 | 30 | 63,37 | 218 | 382,97 | 36 | 82,85 | #DIV/0! | #DIV/0! | #DIV/0! | #DIV/0! | #DIV/0! | #DIV/0! |
| December | 0 | 0 | 0 | 14 | 36,17 | 50 | 97,37 | 80 | 157,65 | #DIV/0! | #DIV/0! | #DIV/0! | #DIV/0! | #DIV/0! | #DIV/0! |
| Total | 48246 | 0 | 26480 | 15041 | 25718,18 | 1840 | 3276,48 | 10131 | 17482,54 | 0,312 | 0,53 | #DIV/0! | #DIV/0! | 0,383 | 0,66 |

HOTEL TUI BLUE Kalamota Island Resort Report last updated on: 15/02/2022

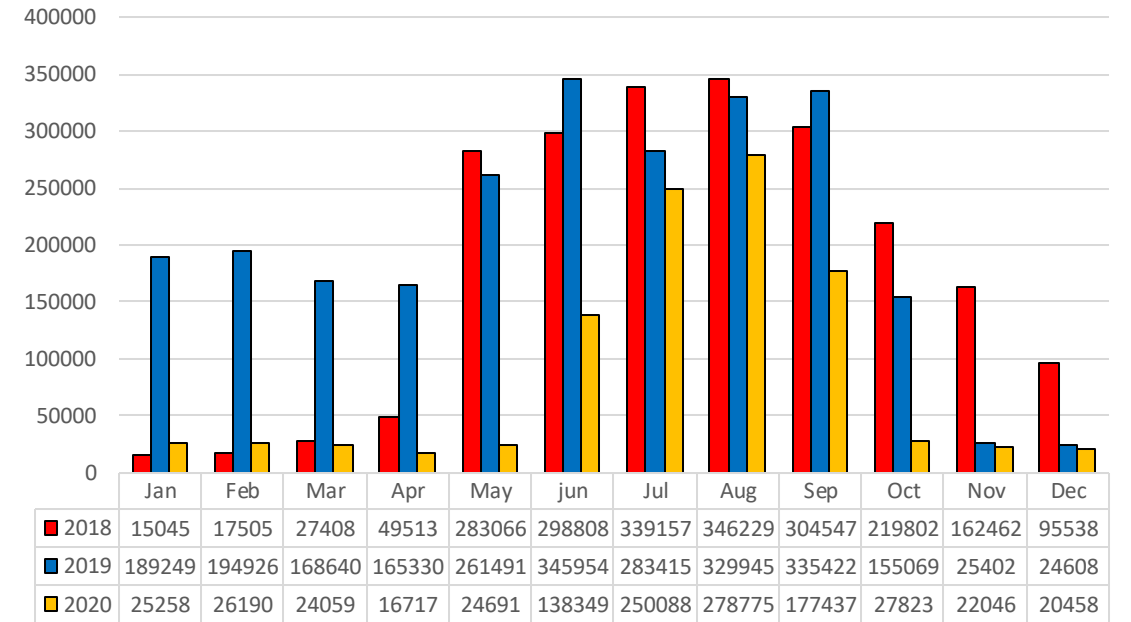
| | Occupancy | | | Totals | | | | | | Water Consumption per Guest | | | | | |
|-----------|-----------|------|------|--------|---------|------|---------|------|---------|-----------------------------|-------------|-------------|-------------|-------------|-------------|
| | 2018 | 2019 | 2020 | 2018 | | 2019 | | 2020 | | 2018 | | 2019 | | 2020 | |
| | | | | m3 | € | m3 | € | m3 | € | m3 | € | m3 | € | m3 | € |
| January | 0 | 0 | 0 | 0 | 20.44 | 0 | 66.50 | 189 | 210.29 | #DIV/0! | #DIV/0! | #DIV/0! | #DIV/0! | #DIV/0! | #DIV/0! |
| February | 0 | 0 | 0 | 0 | 20.44 | 0 | 20.44 | 0 | 20.44 | #DIV/0! | #DIV/0! | #DIV/0! | #DIV/0! | #DIV/0! | #DIV/0! |
| March | 0 | 0 | 0 | 3 | 23.85 | 0 | 20.44 | 176 | 192.92 | #DIV/0! | #DIV/0! | #DIV/0! | #DIV/0! | #DIV/0! | #DIV/0! |
| April | 0 | 0 | 0 | 3708 | 5377.60 | 0 | 5377.60 | 6 | 29.10 | #DIV/0! | #DIV/0! | #DIV/0! | #DIV/0! | #DIV/0! | #DIV/0! |
| May | 6920 | 6920 | 0 | 1105 | 1622.40 | 6956 | 1622.40 | 9 | 33.43 | 0.16 | 0.23 | 1.01 | 0.23 | #DIV/0! | #DIV/0! |
| June | 8325 | 8325 | 0 | 2565 | 2552.19 | 6995 | 2668.56 | 901 | 958.94 | 0.31 | 0.31 | 0.84 | 0.32 | #DIV/0! | #DIV/0! |
| July | 8511 | 8511 | 1825 | 2950 | 2929.49 | 8303 | 2493.64 | 1298 | 1505.31 | 0.35 | 0.34 | 0.98 | 0.29 | 0.71 | 0.82 |
| August | 8348 | 8348 | 2967 | 3759 | 3849.08 | 8626 | 2399.98 | 819 | 829.08 | 0.45 | 0.46 | 1.03 | 0.29 | 0.28 | 0.28 |
| September | 8357 | 8357 | 486 | 3443 | 3413.55 | 7672 | 2294.84 | 811 | 835.12 | 0.41 | 0.41 | 0.92 | 0.27 | 1.67 | 1.72 |
| October | 4579 | 4579 | 0 | 3044 | 3020.22 | 5664 | 5299.72 | 530 | 539.84 | 0.66 | 0.66 | 1.24 | 1.16 | #DIV/0! | #DIV/0! |
| November | 0 | 0 | 0 | 1587 | 1575.70 | 0 | 943.57 | 106 | 124.32 | #DIV/0! | #DIV/0! | #DIV/0! | #DIV/0! | #DIV/0! | #DIV/0! |
| December | 0 | 0 | 0 | 661 | 668.22 | 0 | 146.86 | 44 | 63.56 | #DIV/0! | #DIV/0! | #DIV/0! | #DIV/0! | #DIV/0! | #DIV/0! |

TT HOTELS – WATER AND ENERGY CONSUMPTION TRENDS

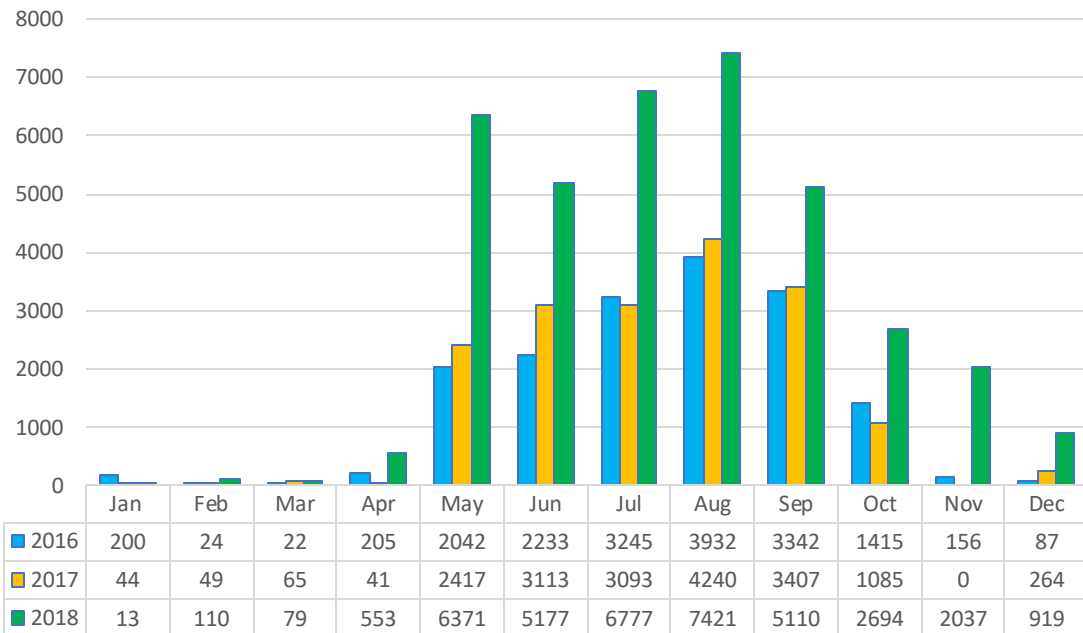
Total energy



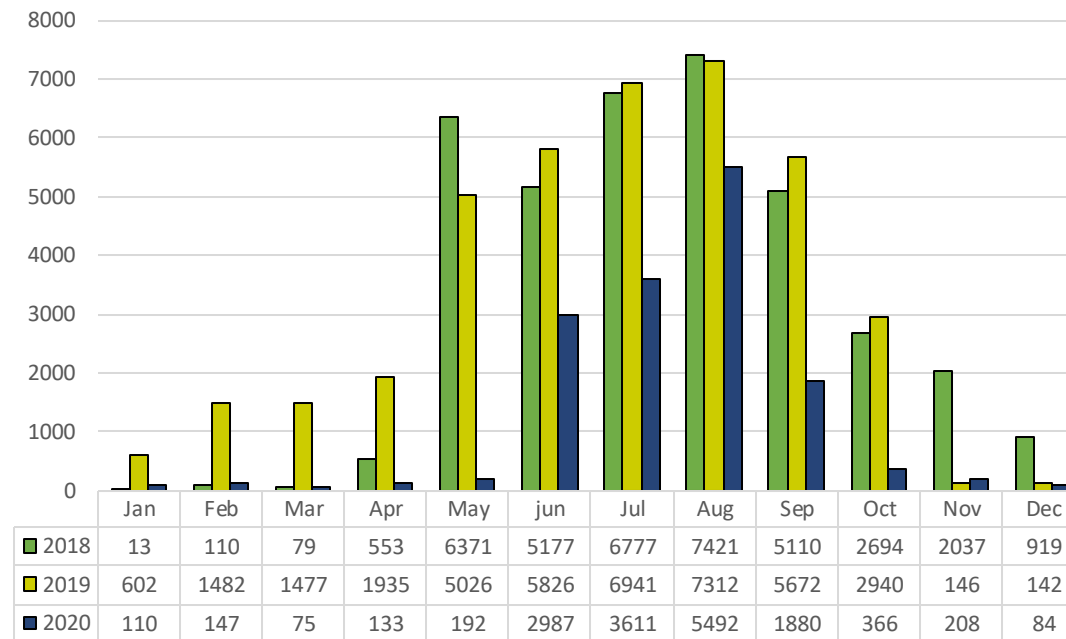
Total Energy



WATER



water



TARGETS – energy & water

| ENERGY | | | | | | | |
|----------------------|--------------|----------------------|--------------|----------------------|--------------|----------------------|--------------|
| 2016 | Target FY 16 | 2017 | Target FY 17 | 2018 | Target FY 18 | 2019 | Target FY 19 |
| Energy per G/N [kWh] | | Energy per G/N [kWh] | | Energy per G/N [kWh] | | Energy per G/N [kWh] | |
| 23.81 | 22 | 23.52 | 21.5 | 21.2 | 21 | | 20.5 |

| WATER | | | | | | | |
|-------------------|--------------|-------------------|--------------|-------------------|--------------|-------------------|--------------|
| 2016 | Target FY 16 | 2017 | Target FY 17 | 2018 | Target FY 18 | 2019 | Target FY 19 |
| Water per G/N [L] | | Water per G/N [L] | | Water per G/N [L] | | Water per G/N [L] | |
| 537 | 495 | 416 | 490 | 369 | 450 | | 350 |



| ENERGY | | | | | | | |
|----------------------|--------------|----------------------|--------------|----------------------|--------------|----------------------|--------------|
| 2016 | Target FY 16 | 2017 | Target FY 17 | 2018 | Target FY 18 | 2019 | Target FY 19 |
| Energy per G/N [kWh] | | Energy per G/N [kWh] | | Energy per G/N [kWh] | | Energy per G/N [kWh] | |
| 21.28 | 20 | 21.73 | 19 | 22.3 | 19 | | 19 |

| WATER | | | | | | | |
|-------------------|--------------|-------------------|--------------|-------------------|--------------|-------------------|--------------|
| 2016 | Target FY 16 | 2017 | Target FY 17 | 2018 | Target FY 18 | 2019 | Target FY 19 |
| Water per G/N [L] | | Water per G/N [L] | | Water per G/N [L] | | Water per G/N [L] | |
| 309 | 315 | 379 | 315 | 507 | 305 | | 300 |



| ENERGY | | | | | | | |
|----------------------|--------------|----------------------|--------------|----------------------|--------------|----------------------|--------------|
| 2016 | Target FY 16 | 2017 | Target FY 17 | 2018 | Target FY 18 | 2019 | Target FY 19 |
| Energy per G/N [kWh] | | Energy per G/N [kWh] | | Energy per G/N [kWh] | | Energy per G/N [kWh] | |
| 19.25 | 19 | 20.62 | 18.5 | 19.69 | 18.5 | 20.85 | 18 |

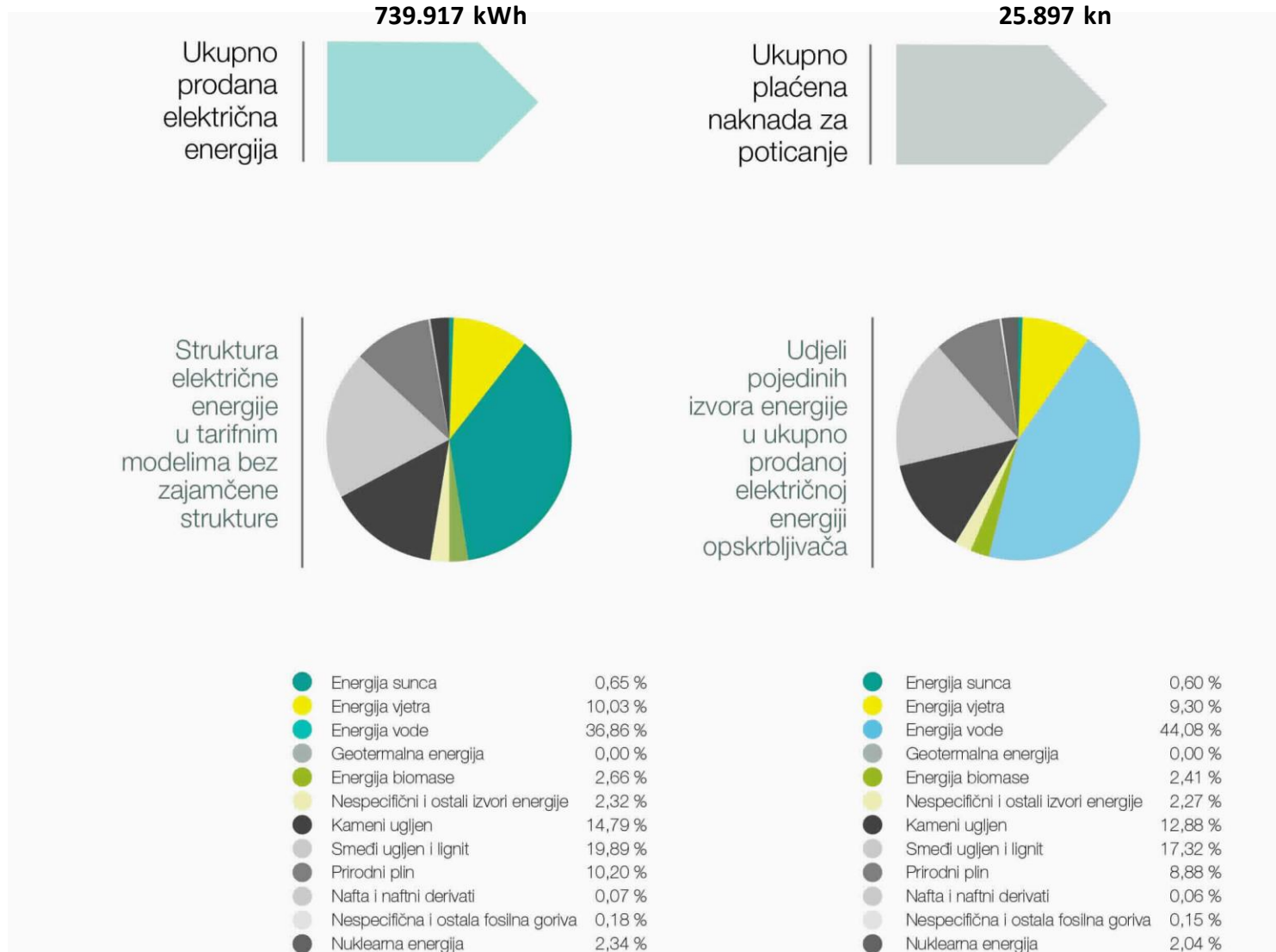
| WATER | | | | | | | |
|-------------------|--------------|-------------------|--------------|-------------------|--------------|-------------------|--------------|
| 2016 | Target FY 16 | 2017 | Target FY 17 | 2018 | Target FY 18 | 2019 | Target FY 19 |
| Water per G/N [L] | | Water per G/N [L] | | Water per G/N [L] | | Water per G/N [L] | |
| 346 | 345 | 365 | 350 | 367 | 340 | | 340 |



| ENERGY | | | | | | | |
|----------------------|--------------|----------------------|--------------|----------------------|--------------|----------------------|--------------|
| 2016 | Target FY 16 | 2017 | Target FY 17 | 2018 | Target FY 18 | 2019 | Target FY 19 |
| Energy per G/N [kWh] | | Energy per G/N [kWh] | | Energy per G/N [kWh] | | Energy per G/N [kWh] | |
| 23.81 | 22 | 23.52 | 21.5 | 21.2 | 21 | | 20.5 |

| WATER | | | | | | | |
|-------------------|--------------|-------------------|--------------|-------------------|--------------|-------------------|--------------|
| 2016 | Target FY 16 | 2017 | Target FY 17 | 2018 | Target FY 18 | 2019 | Target FY 19 |
| Water per G/N [L] | | Water per G/N [L] | | Water per G/N [L] | | Water per G/N [L] | |
| 537 | 495 | 416 | 490 | 369 | 450 | | 350 |

Structure/source of electrical energy used in TUI BLUE Kalamota Island Resort (fossil VS renewable)



Structure/source of electrical energy used in TUI BLUE Adriatic Beach and TUI BLUE Makarska (fossil VS renewable)

Ukupno prodana električna energija

3.034.798 kWh

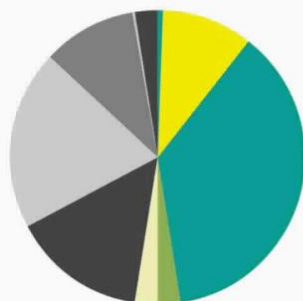


Ukupno plaćena naknada za poticanje

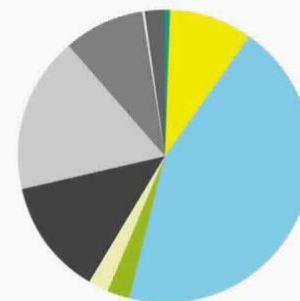
106.218 kn



Struktura električne energije u tarifnim modelima bez zajamčene strukture



Udjeli pojedinih izvora energije u ukupno prodanoj električnoj energiji opskrbljivača



| | |
|---|---------|
| ● Energija sunca | 0,65 % |
| ● Energija vjetra | 10,03 % |
| ● Energija vode | 36,86 % |
| ● Geotermalna energija | 0,00 % |
| ● Energija biomase | 2,66 % |
| ● Nespecifični i ostali izvori energije | 2,32 % |
| ● Kameni ugljen | 14,79 % |
| ● Smeđi ugljen i lignit | 19,89 % |
| ● Prirodni plin | 10,20 % |
| ● Nafta i naftni derivati | 0,07 % |
| ● Nespecifična i ostala fosilna goriva | 0,18 % |
| ● Nuklearna energija | 2,34 % |

| | |
|---|---------|
| ● Energija sunca | 0,60 % |
| ● Energija vjetra | 9,30 % |
| ● Energija vode | 44,08 % |
| ● Geotermalna energija | 0,00 % |
| ● Energija biomase | 2,41 % |
| ● Nespecifični i ostali izvori energije | 2,27 % |
| ● Kameni ugljen | 12,88 % |
| ● Smeđi ugljen i lignit | 17,32 % |
| ● Prirodni plin | 8,88 % |
| ● Nafta i naftni derivati | 0,06 % |
| ● Nespecifična i ostala fosilna goriva | 0,15 % |
| ● Nuklearna energija | 2,04 % |

TARGETS FOR HOTELS

1. To become guests No. 1 choice
2. Continue to be innovative
3. Provide TOP services
4. To become fully a part of TUI Hotels

VS



SUSTAINABILITY TARGETS

1. Increase of the recycled solid and liquid waste.
2. Increase in the production of solar energy and supply
3. Reduce water, electricity, gas and oil consumption
4. Raise staff and guest awareness on social and environmental issues.
5. Continue to implement and reinforce the hotel's mission which is; to offer high quality leisure services in a friendly and relaxing environment as well as a comfortable stay to the hotel's guest.



BETTER HOLIDAYS
BETTER WORLD



ENERGY CONSUMPTION TARGETS

TUI BLUE Adriatic Beach Resort

| INDICATOR | TARGET | ACTUAL CONSUMPTION | ACTUAL vs. TARGET | ACTUAL vs. LAST YEAR |
|-------------|---------------------|---------------------|-------------------|----------------------|
| YEAR | kWh per guest night | kWh per guest night | % | % |
| 2018 | 21 | 22.41 | 6.71% | - |
| 2019 | 20.5 | 19.5 | -4.88% | -14.92% |
| 2020 | 20.5 | 43.67 | 113.02% | 55.35% |
| 2021 | 26.4 | 29.49 | 11.70% | -48.08% |

ENERGY CONSUMPTION TARGETS

TUI BLUE Makarska

| INDICATOR | TARGET | ACTUAL CONSUMPTION | ACTUAL vs. TARGET | ACTUAL vs. LAST YEAR |
|-----------|---------------------|---------------------|-------------------|----------------------|
| YEAR | kWh per guest night | kWh per guest night | % | % |
| 2018 | 18.15 | 20.85 | 14.88% | - |
| 2019 | 18 | 19.1 | 6.11% | -9.16% |
| 2020 | 26.8 | | N/A | N/A |
| 2021 | 17.5 | 14.85 | -15.14% | -28.62% |

ENERGY CONSUMPTION TARGETS

TUI BLUE Kalamota Island Resort

| INDICATOR | TARGET | ACTUAL CONSUMPTION | ACTUAL vs. TARGET | ACTUAL vs. LAST YEAR |
|-----------|---------------------|---------------------|-------------------|----------------------|
| YEAR | kWh per guest night | kWh per guest night | % | % |
| 2018 | 19 | 22.3 | 17.37% | - |
| 2019 | 19 | 21.59 | 13.63% | -3.29% |
| 2020 | 19 | 51.91 | 173.21% | 58.41% |
| 2021 | 22.49 | 19.61 | -12.81% | -10.10% |

WATER CONSUMPTION TARGETS

TUI BLUE Adriatic Beach Resort

| INDICATOR | TARGET | ACTUAL CONSUMPTION | ACTUAL vs. TARGET | ACTUAL vs. LAST YEAR |
|-----------|-----------------------|-----------------------|-------------------|----------------------|
| YEAR | Litre per guest night | Litre per guest night | % | % |
| 2018 | 450 | 369 | -18.00% | - |
| 2019 | 350 | 324.13 | -7.39% | -13.84% |
| 2020 | 350 | 619 | 76.86% | 47.64% |
| 2021 | 470 | 506.34 | 7.73% | -22.25% |
| 2022* | 370 | 386 | 4.32% | -31.18% |

WATER CONSUMPTION TARGETS

TUI BLUE Makarska

| INDICATOR | TARGET | ACTUAL CONSUMPTION | ACTUAL vs. TARGET | ACTUAL vs. LAST YEAR |
|-----------|-----------------------|-----------------------|-------------------|----------------------|
| YEAR | Litre per guest night | Litre per guest night | % | % |
| 2018 | 340 | 367 | 7.94% | - |
| 2019 | 340 | 312 | -8.24% | -17.63% |
| 2021 | 407 | 383 | -5.90% | 18.54% |
| 2022* | 335 | 330 | -1.49% | -16.06% |

WATER CONSUMPTION TARGETS

TUI BLUE Kalamota Island Resort

| INDICATOR | TARGET | ACTUAL CONSUMPTION | ACTUAL vs. TARGET | ACTUAL vs. LAST YEAR |
|-----------|-----------------------|-----------------------|-------------------|----------------------|
| YEAR | Litre per guest night | Litre per guest night | % | % |
| 2018 | 380 | 506.77 | 33.36% | - |
| 2019 | 380 | 409.9 | 7.87% | -23.63% |
| 2020 | 370 | 926.3 | 150.35% | 55.75% |
| 2021 | 370 | N/A | N/A | N/A |
| 2022* | 370 | 361.96 | -2.17% | -13.24% ** |

BLUES

THANK YOU!

TUI BLUE